

Treftz **WHERE**
MUSCLE
STILL MATTERS
ANNUAL PRODUCTION SALE

FEBRUARY 10, 2024 • 1 P.M.
at the ranch in Wetonka, South Dakota



CELEBRATING 41 YEARS IN THE LIMOUSIN BREED

SALE INFORMATION

VIEW AND BID ONLINE:

..... www.dvauction.com

SUPPLEMENT INFORMATION:

· Yearling Weights, Scrotal Measurements and Ultrasound data will be available sale day and online at www.treftzlimousin.com.

TRUCKING AND BOARDING:

- Free boarding on yearling bulls until fertility tested—generally by April 1, 2024. A charge of \$2.50 per day after that. Boarding no longer than May 1, 2024.
- **Fall and two-year-old bulls picked up or delivered by March 1, 2024.** A charge of \$5.00 per day after that. \$50 off on these bulls picked up sale day. Boarding no longer than May 1, 2024.
- Free delivery up to 150 miles on yearling bulls.
- Bred heifers and open heifers to be taken home sale day or shortly after.

PURCHASER OBLIGATION:

- All animals are at risk of the purchaser once sale is made.
- Border fees out of the U.S. is the responsibility of buyer.

HEALTH AND PAPERWORK:

- Vaccinations—(Spring) Vira-Shield 6 with Somnus, Pasteurella Presponse, Ultrabac 7; (Fall) Covexin 8, Inforce 3, Presponse. Booster-Vira-Shield 6+Somnus, Oral Wormer, Cylence and Cleanup Pour On
- Health papers and brand release furnished where required.
- Registration papers transferred to new owner.

VIEWING, CATALOG AND VIDEOS:

- Catalog and videos of bulls can be viewed online at www.treftzlimousin.com, www.mcmarketingmanagement.com or www.dvauction.com
- Buyers are encouraged to view the cattle any time prior to sale date in case of inclement weather sale day.

All cattle sell under the standard terms and conditions of the North American Limousin Foundation.

AUCTIONEER:

Chisum Peterson (605) 730-4214

SALE CONSULTANT:

Kiley McKinna, MC Marketing Management (402) 350-3447
Wiley Fanta, MC Marketing Management (320) 287-0751

SPECIAL GUESTS:

Dean Summerbell, Heartland Limousin Assn. (612) 963-3799
Bev Summerbell, Heartland Limousin Assn. (763) 232-9302
Andy Rest, *Cattle Business Weekly* (406) 670-5678
Garth Waletich, Aberdeen Livestock (605) 290-3546
Justin Dikoff, DV Auction (605) 290-0635
Merlin "Speed" Siegfried (605) 868-9266

SALE-DAY PHONES:

Glenn Treftz (605) 380-0014
Lori Hill (785) 410-1899
Kiley McKinna (402) 350-3447
Wiley Fanta (320) 287-0751

CONSULTING VETERINARIANS:

Dr. Tim Kruse, Wetonka Vet Clinic, Wetonka, SD (605) 225-7176

MORTALITY INSURANCE:

Inquire at clerk's desk.

HOTEL ACCOMMODATIONS:

Ramkota Hotel (605) 229-4040
Hampton Inn (605) 262-2600
Quality Inn (605) 277-1402
Fairfield Inn (605) 229-9990

AIRPORT SERVICE:

Aberdeen Regional Airport (605) 626-7020

EPDs are dated 1/13/2024



SALE INFORMATION

Treftz WHERE Muscle STILL MATTERS ANNUAL PRODUCTION SALE

FEBRUARY 10, 2024

at the ranch in Wetonka, South Dakota
(13 miles west and 9 miles north of Aberdeen, SD)

Lunch 11:30 a.m. • Sale 1:00 p.m.

SELLING 76 HEAD

- 32 – Yearling Bulls
- 8 – Fall Yearling Bulls
- 4 – Two Year Old Bulls
- 7 – Bred Heifers
- 14 – Open Heifers
- 11 – Open Commercial Heifers

Dear Friends and Cattlemen,

Pictures and videos, often taken in the harsh month of January, sometimes don't give an accurate representation of an animal. If possible, seeing the cattle prior to the sale or on sale day will give you a true appreciation of their size, muscularity, and attitude. So with that, we welcome you to our sale or any time prior to February 10, 2024!

If you're in the market for traditional, heavy muscled and big performance oriented Limousin bulls in mass, the second Saturday of February offers you one of the only opportunities left in the continental U.S. We've been doing this for 40 plus years and we have it down. We strongly believe "real" Limousin should have muscle and 2 copies of the myostatin gene. We feel this gene is inherent in our herd as 100% of the top end bulls we tested again are all carrying 2 copies. The results are listed in the footnotes.

I don't know of a better cross on English-based cows than the high percentage Limousin bulls you'll find in this sale. We've tested it ourselves with our F1 baldies for the past seven years and the hybrid vigor is very real. The demand for our F1s bred Limousin each fall has been incredible. The new owners are seeing for themselves how great this cross is. The commercial opens in this sale are evidence of those matings.

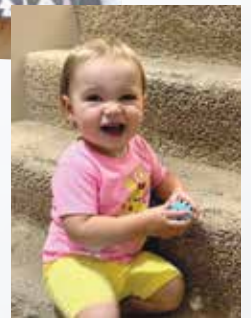
We've maintained the muscle and the performance of our cattle while making substantial advances on milk and disposition. Whether you are striving for bigger weaning weights or building a better cowherd, we strongly feel these are the kind of bulls that can do both. I have always been irritated with the words "terminal cross" as it sounds so dead end. Yes, you can have carcass and great females within the same breed. The testimonials you'll find throughout the catalog are comments over the past year from our commercial producers that are realizing the benefits of using TREF genetics.

In a little over an hour, our year's worth of work will be sold in our sale. We understand that our "payday" might not align with yours. If you might be in this situation, reach out to us prior to the sale and we will help. Pay what you can on sale day and the rest as it comes available to you at no interest. It's been very rewarding getting several young producers started this way with their first TREF genetics on just a hand shake.

With a friend of mine, I made some long awaited herd visits in Minnesota, Iowa and Wisconsin in mid September seeing some great scenery and cattle. It humbled me to see just how far some of you travel, often in times inclement weather, to attend our sale. I am so honored and grateful for the business relationships that have developed into friendships during my 40 plus years in Limousin cattle. Your trust and commitment to our program means the world to us.

We hope you can join us for lunch and some friendly companionship with fellow Limousin enthusiasts on February 10.

Sincerely,
The Treftz Family



SALE CONSULTANT:

Mc
Marketing Management

KILEY MCKINNA

402.350.3447

WILEY FANTA

320.287.0751

648 West Sawgrass Trail

Dakota Dunes, SD 57049

mcmarketingsales@aol.com



GLENN TREFTZ

12510 370th Avenue • Wetonka, SD 57481

Phone: 605-380-0014

treftzlimousin.com





The 18-month-old and two-year-old bulls are virgin bulls and are being offered again this year. We try to carry over bulls as two-year-olds if they are born later in the spring. They have been on a grain ration of corn/dry distillers at a ratio of .075% of body weight and free choice prairie hay. They have been free roaming on a small pasture to keep them in optimal breeding condition.

The yearling bulls have had a similar diet of corn/dry distillers at less than 1% of body weight and the same free choice chopped hay. CTC medicated pellets are fed for five days every 45 days to keep the bulls healthy. They were weaned and put back on pasture until December 20. No silage is used in any of the bull rations.

The bulls will be fertility tested and will have been vaccinated with Bovi-shield Gold FP5/VL5, anthrax and twice for pinkeye and foot rot prevention prior to delivery. The older bulls will be trich tested for states where needed. All our cattle are on a complete Purina mineral program year around. Please let us know prior to delivery if there are required vaccinations for your area of the country that are important to you. We also pour the bulls monthly with different products to keep in ahead of lice and rubbing issues. Several of the top end bulls have been tested for the F94L Myostatin gene and the results are added in the footnotes.

Many of the bulls have been tested for the Homo polled and Homo black genes with the results listed on the pedigree of each bull.

We will keep the yearling bulls free of charge until April 1. After a satisfactory fertility exam, we will deliver the bulls with no cost to you up to 150 miles. Beyond that, we will work with you in getting your bulls delivered to an agreed upon central point. Please bring your trailer if you are thinking about purchasing a two-year-old bull, fall bull or open heifers as we would like to move them as soon as possible right after the sale. We will deduct \$50 for each bull taken home sale day. A veterinarian will be on hand to issue health papers where needed.

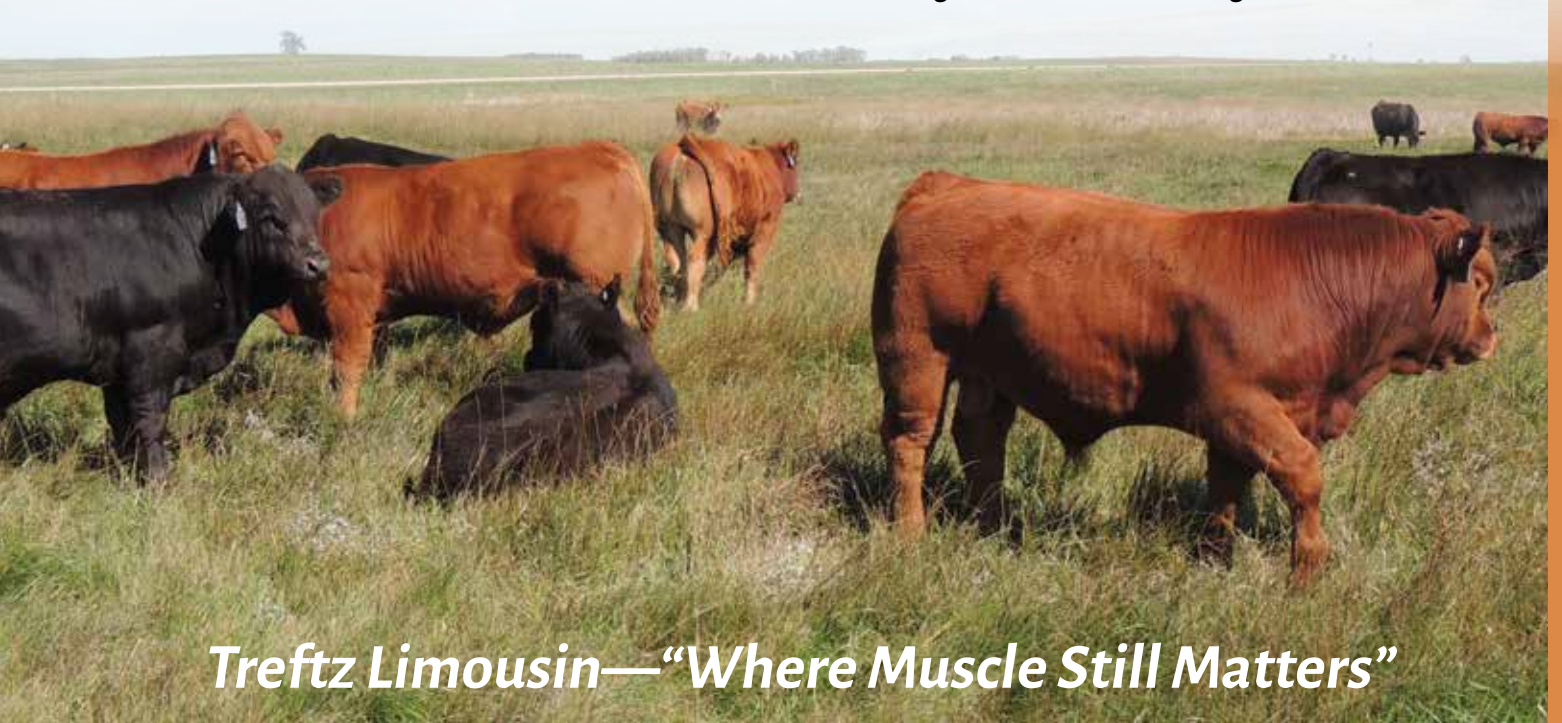
A supplement sheet will be available online and sale day with adjusted yearling weights, scrotal measurements, and ultrasound data. Be sure to go to our website www.treftzlimousin.com or www.dvauction.com for updated pictures, videos and other data.

Again this year, we are including a calving-ease score based on a combination of pedigree, EPDs, and calving history from sire and dam.

E - Recommended for cows only

EE - Should work on cows or heifers

EEE - A good choice for breeding heifers



Treftz Limousin—“Where Muscle Still Matters”

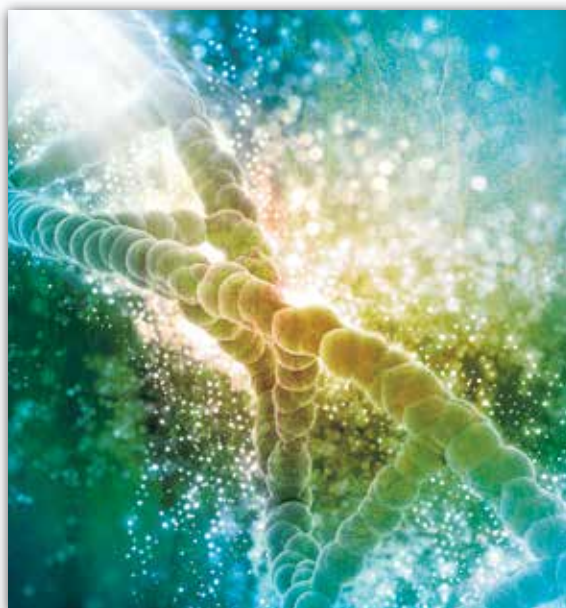
Did you know...

Sometimes you reap a benefit without even knowing. Did you know Limousin cattle have a distinct gene called myostatin found in all fullblood Limousin cattle and likely in many purebreds with muscle expression? The myostatin gene is responsible for muscling and tenderness, yes, TENDERNESS in our beef. Studies performed indicate an improvement of up to 19% of the Primal Cuts of a beef carcass carrying two copies of the myostatin variant F94L. The data also cites better feed conversion rates.

In our program, we use the F94L as a tool for our breeding

program. Over the years, we've tested several bulls and all have carried both copies. We feel confident

this gene is inherent in our herd. As you will note, some of our top lots will carry the test result for the myostatin.



How should you use the data?

If you want feeder calves that have increased thickness then you'll want to select genetics carrying two copies of the F94L, especially if your cow herd is British based.

More For Less

THE LIMOUSIN ADVANTAGE

In a time where prices for our cattle are struggling to stay above input costs, feed conversion and cattle that perform will always improve the bottom line. Over the last 35 years in the Limousin business, one of our main focuses is on performance with as little feed input as possible. Our efforts have paid off.

In 2016, we were asked by our local Purina Company to participate in a feed trial using a product called Accuration Starter CP HL (in a pellet) fed free choice on our weaning bull calves. Already knowing Limousin is a very feed efficient breed, we were shocked with the results at the end of the 27 day trial.

Below are the results of 520 trials Purina conducted with several different breeds and Treftz Limousin on the bottom row. See the difference quality Limousin cattle will produce!

520 Proofs	Start Weight	End Weight	Days on Feed	ADG	Feed Conversion	Accuration Intake/Day	Grain % of Body Wt.
	499	575	22	3.47	4.79 to 1	15.11 lbs.	2.86%
Treftz Proof	Start Weight	End Weight	Days on Feed	ADG	Feed Conversion	Accuration Intake/Day	Grain % of Body Wt.
	692	821	27	4.79	3.81 to 1	11.02 lbs.	1.46%

YEARLING BULLS



LOT
1



TREF CORSAGE 117C • Dam of Lot 1



LOT 1 • Pictured as calf



2021 maternal brother



2022 maternal brother

TREF LEGENDARY 117L

PUREBRED(92/88.5) BULL • HOMO POLLED (T) • RED
02/21/2023 • TREF 117L • NPM2567104

TOMV DIESEL 619D
TREF HARDCORE 204H
TREF DELANEY 204D

ROMN ZINGRAY 125Z
TREF CORSAGE 117C
TREF YOKO 717Y

CV AUSTIN 701A
MISS TOM 118Y
JYF YIELDMASTER 80Y
TREF TREASURE 304T

WULFS WAGON TRAIN 3197W
ROMN RAZZLE DAZZLE 10R
TREF WARLORD 334W
TREF STAR LIGHT 216S

ACT BW
91
ADJ WW
700

	CE	BW	WW	YW	MK	TM	CM	SC	DC	YG	CW	RE	MB	\$MTI
EPDS	10	2.3	74	122	27	64	9	.7	16	-.55	40	1.44	-.10	53
%Rank	50	75	20	10	30	15	10	30	15	25	10	3	75	45

Retaining 1/2 Interest

Like his name, we really feel this bull will be a legend. He's had the "Lot 1" look since he dried off at birth and just continues to impress as time goes on. He has the same look as Hardcore did as a calf with a bit wider base and more moderate frame. Coupled with an impressive build, he excels in yearling and carcass weight with top 10% rankings, and rings the bell with a top 3% ranking for ribeye. He has a super easy-going demeanor, like all the Hardcore progeny. Great EPD package. Don't miss out on your chance to own this remarkable individual that will predictably advance your breeding program to new heights.

CALVING EASE: E
F94L MYOSTATIN 2

GE-EPDs

YEARLING BULLS



LOT 2
Pictured as calf



TREF CASSIE 177C • Dam of Lot 2

2

TREF LIEUTENANT 177L

PUREBRED(94/89.1) BULL • HOMO POLLED (P-3) • RED
03/15/2023 • TREF 177L • NPM2567108

TREF COAL TRAIN 707C
TREF GRAND SLAM 111C
TREF CHANEL 111C

TREF ZEUS 232Z
TREF CASSIE 177C
TREF ZOPHIE 841Z

RPY PAYNES DERBY 46Z
TREF YESTERDAY 707Y
JYF YIELDMASTER 80Y
TREF WINDSWEPT 511W

ROMN TOW TRUCK 111T
TREF RED WINE 232R
RICHMOND XANDER SRD 22X
TREF TAWNY 341T

ACT BW
95

ADJ WW
770

	CE	BW	WW	YW	MK	TM	CM	SC	DC	YG	CW	RE	MB	\$MTI
EPDS	8	2.9	65	101	34	66	5	.65	17	-.51	32	1.34	-.12	49
%Rank	70	85	50	45	2	10	65	40	10	35	25	10	80	70

Direct your attention here folks! This is a big volumed bull that is thick, soft-sided and sound. His dam could be one of the greatest cows ever produced here. Every calf she has raised, whether it was a bull or a heifer, has topped our sale. Her six natural-sired calves have a weaning ratio of 116 and a yearling ratio of 109. Lieutenant ranks in the top 10% for both total maternal and ribeye, while toting a top 2% ranking for milk. Don't hesitate sale day—you will not be disappointed!

CALVING EASE: E

F94L MYOSTATIN 2



2019 maternal sister



2020 maternal sister



2021 maternal brother



2022 maternal brother

YEARLING BULLS



LOT
3

**SELLING
BUYER'S
CHOICE
LOTS 3, 4 & 5**



LOT
4



TREF LIVING LEGEND 1601L ET

PUREBRED(87/80.8) BULL · HOMO POLLED (P-1) · RED
02/26/2023 · TREF 1601L · NPM2607981

B BAR AUSTIN HEALY 4D ET
ANCHOR B GOLD RUSH 48G
ANCHOR B BAILEY 21B

TOMV DIESEL 619D
TREF JOSIE 710J
TREF BRYNN 075B

IVY'S BUBBA WATSON HTZ24B
B BAR POLLED UNIQUE
ANCHOR B "THE BOSS"
ANCHOR B ZAHARA

CV AUSTIN 701A
MISS TOM 118Y
CF JIM DANDIE 216U
TREF 475

ACT BW
96
ADJ WW
745

	CE	BW	WW	YW	MK	TM	CM	SC	DC	YG	CW	RE	MB	\$MTI
EPDS	6	4.8	89	135	29	73	5	.65	16	-.55	42	1.48	-.05	60
%Rank	90	>95	1	2	15	2	70	40	15	25	5	2	60	15



TREF LEGION OF DOOM 467L ET

PUREBRED(87/80.8) BULL · HOMO POLLED (P-1) · RED
02/28/2023 · TREF 467L · NPM2607983

B BAR AUSTIN HEALY 4D ET
ANCHOR B GOLD RUSH 48G
ANCHOR B BAILEY 21B

TOMV DIESEL 619D
TREF JOSIE 710J
TREF BRYNN 075B

IVY'S BUBBA WATSON HTZ24B
B BAR POLLED UNIQUE
ANCHOR B "THE BOSS"
ANCHOR B ZAHARA

CV AUSTIN 701A
MISS TOM 118Y
CF JIM DANDIE 216U
TREF 475

ACT BW
99
ADJ WW
699

	CE	BW	WW	YW	MK	TM	CM	SC	DC	YG	CW	RE	MB	\$MTI
EPDS	5	5.3	95	140	29	76	4	.65	15	-.59	39	1.51	-.31	52
%Rank	95	>95	1	1	15	1	80	40	20	15	10	2	>95	55



YEARLING BULLS



LOT 5 • Pictured in September

5

TREF LUNKER 1607L ET

PUREBRED(87/80.8) BULL • HOMO POLLED (P-1) • RED
03/04/2023 • TREF 1607L • NPM2607984

B BAR AUSTIN HEALY 4D ET
ANCHOR B GOLD RUSH 48G
ANCHOR B BAILEY 21B

TOMV DIESEL 619D
TREF JOSIE 710J
TREF BRYNN 075B

IVY'S BUBBA WATSON HTZ24B
B BAR POLLED UNIQUE
ANCHOR B "THE BOSS"
ANCHOR B ZAHARA

CV AUSTIN 701A
MISS TOM 118Y
CF JIM DANDIE 216U
TREF 475

ACT BW
103
ADJ WW
834

	CE	BW	WW	YW	MK	TM	CM	SC	DC	YG	CW	RE	MB	\$MTI
EPDS	6	3.8	82	121	29	70	5	.65	17	-.59	44	1.56	-.2	52
%Rank	90	95	4	10	15	3	70	40	10	15	3	1	95	55

GE-EPDs



ANCHOR B GOLD RUSH 48G • Sire of Lots 3, 4 & 5

It's hard to pick a favorite from these three ET calves, so a buyer's choice seems like the easy way out. Even though they are full sibs, each is a little different than the other. We'll let you decide. This mating was stacked for total growth, milk, disposition and a great EPD package. Their dam, TREF Josie 710J, who we flushed as a heifer, was a standout as a calf. A typical TOMV Diesel daughter with her length of body, performance and great disposition. Her first natural calf sells as Lot 37. Don't get overly concerned with the birth weight EPDs as they were all born unattended and unassisted like we expect all our mature cows to do. Remember, length of body is a big contributor to birth weight. We overlooked testing the ET calves for the F94L gene but can almost guarantee they are carrying both copies. There's no wrong decision here!

CALVING EASE: E



TREF JOSIE 710J • Dam of Lots 3, 4 & 5

YEARLING BULLS



TREF GEMMA 577G • Dam of Lot 6



TREF ZENA 836Z • Dam of Lot 7



6

TREF LONE RANGER 577L

PUREBRED(94/86.3) BULL • HOMO POLLED (P-1) • RED
03/13/2023 • TREF 577L • NPM2567145

WULFS CAPER 3303C
TREF EZ STREET 107E
TREF COCOA BEAN 107C

COLE DAZZLE 74D
TREF GEMMA 577G
TREF CASSIE 177C

KORC WULFS SNOW PRINCE
WULFS ARMADA 3303A
DLVL AEROSMITH 329A
TREF ASIA 907A

COLE ARCHITECT 08A
COLE MISS NASA 006X
TREF ZEUS 232Z
TREF ZOPHIE 841Z

ACT BW
97
ADJ WW
799

	CE	BW	WW	YW	MK	TM	CM	SC	DC	YG	CW	RE	MB	\$MTI
EPDS	6	1.9	76	110	32	70	5	1	12	-.49	46	1.48	-.03	56
%Rank	90	65	15	20	5	3	65	10	70	40	3	2	50	30

TREF Lone Ranger is soft in his pasterns and long bodied with a great **GE-EPDs** disposition. His sire, TREF EZ Street, has 12 EPDs in the top 25% of the breed. His dam is a daughter of our TREF Cassie 177C cow who has produced high sellers every year with TREF Junkyard, TREF Kingpin and TREF Lieutenant on her last three outings. Lone Ranger's dam was a high-selling heifer in one of our previous sales but unfortunately for the buyer, the hassles of Covid made getting her across the border to Canada very difficult. Hence, she stayed and is making a big impact in our herd. Take note of his impressive EPD profile.

CALVING EASE: E
F94L MYOSTATIN 2

7

TREF LOCKDOWN 836L

PUREBRED(100/89.5) BULL • HOMO POLLED (T) • RED
03/08/2023 • TREF 836L • NPM2567177

TOMV DIESEL 619D
TREF HARDCORE 204H
TREF DELANEY 204D

RICHMOND XANDER SRD 22X
TREF ZENA 836Z
TREF PERFECTION 036P

CV AUSTIN 701A
MISS TOM 118Y
JYF YIELDMASTER 80Y
TREF TREASURE 304T

RPY PAYNES MARATHON 47U
RICHMOND TWIST SRD 22T
ROMN JUSTICE
TREF 336G

ACT BW
94
ADJ WW
699

	CE	BW	WW	YW	MK	TM	CM	SC	DC	YG	CW	RE	MB	\$MTI
EPDS	6	4.2	70	105	28	63	5	.25	10	-.58	27	1.34	-.22	48
%Rank	90	>95	30	35	20	20	70	90	85	15	40	10	95	80

Herd bull alert! Take note of this well-balanced individual that comes to you in a homozygous polled, red-hided package. TREF Lockdown is a deep bodied and heavy muscled Hardcore son out of a 14-year-old Richmond Xander cow that was one of our very best and most consistent. He possesses an EPD profile highlighted with a top 10% ranking for ribeye, a top 15% ranking for yield grade and top 20% rankings for both milk and total maternal. Another one of those bulls to build a herd around.

CALVING EASE: E
F94L MYOSTATIN 2

YEARLING BULLS



Full sib to Lot 8



LOT 9 • Pictured as calf



8

TREF LARIET 660L

PUREBRED(100/90) BULL · HOMO POLLED (P-1) · RED
03/25/2023 · TREF 660L · NPM2567157

WULFS CAPER 3303C
TREF EZ STREET 107E
TREF COCOA BEAN 107C

B BAR BENTLEY 8D
TREF HONEY OATS 660H ET
TREF CHARLOTTE 192C

KORC WULFS SNOW PRINCE
WULFS ARMADA 3303A
DLVL AEROSMITH 329A
TREF ASIA 907A

IVY'S BUBBA WATSON HTZ24B
B BAR WHISKEY GIRL
RPY PAYNES DERBY 46Z
TREF ZAZU 892Z

ACT BW
77
ADJ WW
744

	CE	BW	WW	YW	MK	TM	CM	SC	DC	YG	CW	RE	MB	\$MTI
EPDS	12	-2.7	56	76	32	60	9	.85	18	-.55	32	1.31	-.27	42
%Rank	30	3	80	90	5	35	10	25	3	25	25	10	>95	>95

Retaining 1/2 Interest

We can see Lariat's future as a big-time heifer bull and for that reason we would like to keep an interest in him. He has the pedigree, the EPD package, the actual birth weight to weaning weight spread, and the look to make a name for himself. Throw a lariat around this stud and add him to your battery.

CALVING EASE: EEE
F94L MYOSTATIN 2

GE-EPDs

9

TREF LUCKY STRIKE 318L

PUREBRED(100/89) BULL · HOMO POLLED (P-2) · RED
03/05/2023 · TREF 318L · NPM2567116

TOMV DIESEL 619D
TREF HARDCORE 204H
TREF DELANEY 204D

ROMN TOW TRUCK 111T
TREF ELANA 318E
TREF CLEMENTINE 106C

CV AUSTIN 701A
MISS TOM 118Y
JYF YIELDMASTER 80Y
TREF TREASURE 304T

WULFS RANSOM 3059R
ROMN RITA 28R
JYF YIELDMASTER 80Y
TREF ZOWIE 806Z

ACT BW
81
ADJ WW
712

	CE	BW	WW	YW	MK	TM	CM	SC	DC	YG	CW	RE	MB	\$MTI
EPDS	10	-1.1	62	91	28	59	7	.2	9	-.57	17	1.33	-.06	51
%Rank	50	15	60	65	20	40	35	90	85	20	75	10	60	60

Retaining 1/2 Interest

As you can see, from day one this bull has had that stout look and herd bull phenotype that will make your neighbors lay on the brakes when they drive by your pasture. Dead head gentle and very moderate framed. He is stacked on both sides of his pedigree with the best maternal genetics our program has used. He should make great females. We feel he will be heifer safe.

CALVING EASE: EE
F94L MYOSTATIN 2

GE-EPDs

YEARLING BULLS



LOT
10

TREF EMMA LOU 345E • Dam of Lot 10



TREF LEGACY 345L

PUREBRED(100/89.8) BULL • HET POLLED (T) • HET BLACK (T)
03/04/2023 • TREF 345L • NPM2567117

BALAMORE ENDEAVOR 701E
BALAMORE HERSHEY 0120H
CLARKS EXTRAVAGANT KISS

RLF YARDLEY 601Y
CLARKS AFFECTIVE KISS
CLARKS BLOCKBUSTER
DKC UNFORGETTABLE KISS

TREF COAL TRAIN 707C
TREF EMMA LOU 345E
TREF ABILENE 911A

RPY PAYNES DERBY 46Z
TREF YESTERDAY 707Y
VL YES MAN 111Y
TREF TONI 311T

ACT BW
76
ADJ WW
673

	CE	BW	WW	YW	MK	TM	CM	SC	DC	YG	CW	RE	MB	\$MTI
EPDS	14	-2.0	46	62	31	54	8		11	-.63	3	1.17	-.30	38
%Rank	15	10	95	>95	10	70	25		75	5	>95	30	>95	>95

Like his sire, Balamore Hershey, he exudes that herd bull presence when he "struts his stuff". He should be a sure-fire heifer bull. Great disposition. His dam, TREF Emma Lou that ranks in the top 1% of the breed with a +40 for Milk has produced four natural calves that have averaged more than \$10,000 in our last few sales with the likes of TREF Hotshot, our go-to heifer bull; TREF Jetliner, working in the prominent Henley commercial program; and TREF Kennedy, our "choice of the 2022 heifers" purchased by Shy Hawk Limousin. This black-hided herd sire prospect would be a great addition to your herd bull arsenal.

CALVING EASE: EEE
F94L MYOSTATIN 2

GE-EPDS



2020 maternal brother



2022 maternal sister



2021 maternal brother

YEARLING BULLS

11

TREF LIGHTWEIGHT 728L

PUREBRED(100/89) BULL · HOMO POLLED (P-3) · RED
02/26/2023 · TREF 728L · NPM2567167

COLE BUSINESSMAN 104B
SYES EASY GOING 77E
MISS SYES RANSOM 76X

RICHMOND YOGI SRD 7Y
COLE MISS PUREPOWER 809U
WULFS RANSOM 3059R
MISS SYES JUSTICE 476U

TREF DONE RIGHT 707D
TREF JAMAICA 728J
TREF CECILY 137C

RPY PAYNES DERBY 46Z
TREF YESTERDAY 707Y
JYF YIELDMASTER 80Y
TREF X-AMPLE 636X

ACT BW
60
ADJ WW
597

	CE	BW	WW	YW	MK	TM	CM	SC	DC	YG	CW	RE	MB	\$MTI
EPDS	15	-3.5	47	74	22	45	9	.5	15	-.54	16	1.18	-.21	41
%Rank	10	2	95	90	75	95	15	60	20	25	75	30	95	>95

Here's the guaranteed heifer bull of the sale and purposely bred that way. With an actual birth weight of 60, accompanied with an EPD of -3.5, this finer boned, moderately designed yet thick, bull should be the bull that allows you to sleep at night.

CALVING EASE: EEE



12

TREF LEGO 605L

PUREBRED(100/90) BULL · HOMO POLLED (P-1) · BLACK
03/23/2023 · TREF 605L · NPM2567149

SYES USER FRIENDLY 524U
DLVL FEATHERLITE 8138F
DLVL MISS RIPTIDE 929W

WULFS RANSOM 3059R
MISS SYES JUSTICE 224S
RMKR RIPTIDE 515R
TREF MISS 937N

B BAR BENTLEY 8D
TREF HAZEL 605H
TREF ZIG ZAG 882Z

IVY'S BUBBA WATSON HTZ24B
B BAR WHISKEY GIRL
SYES USER FRIENDLY 524U
TREF X-POSE 682X

ACT BW
72
ADJ WW
648

	CE	BW	WW	YW	MK	TM	CM	SC	DC	YG	CW	RE	MB	\$MTI
EPDS	15	-2	49	70	25	50	7	.3	16	-.51	8	.99	-.24	40
%Rank	10	10	95	95	45	85	35	80	15	35	95	70	>95	>95

Here's a great heifer bull candidate. His pedigree is chocked full of Who's Who for big time calving ease sires. Notice his well balanced EPD profile highlighted by top 10% rankings in both calving ease and birth weight. He also ranks in the top 15% for docility. TREF Lego is homozygous polled and black. We think this bull can do wonders for any herd.

CALVING EASE: EEE

"If you were offered a position on the National Limousin office, knowing you, you would decline because it would take you away from the "red family" at Wetonka where your passion lies. Joan and I are so glad to have had the opportunity to use your genetics in our herd. Disposition is the key ingredient that keeps us coming back to Treftz Limousin. Great feeling!"

LaDean and Joan Hettich

13

TREF LAKESIDE 620L

PERCENTAGE(85/77.7) BULL · SCURRED · RED
03/30/2023 · TREF 620L · NXM2567151

TREF COAL TRAIN 707C
TREF GRAND SLAM 111G
TREF CHANEL 111C

RPY PAYNES DERBY 46Z
TREF YESTERDAY 707Y
JYF YIELDMASTER 80Y
TREF WINDSWEEP 511W

TOMV DIESEL 619D
TREF HADLEY 620H
TREF YOURS TRULY 739Y

CV AUSTIN 701A
MISS TOM 118Y
TREF WARLORD 334W

ACT BW
82
ADJ WW
674

	CE	BW	WW	YW	MK	TM	CM	SC	DC	YG	CW	RE	MB	\$MTI
EPDS	10	.9	60	94	28	57	7	.47	11	-.51	24	1.23	-.15	47
%Rank	70	65	45	40	10	30	60	85	50	10	80	5	>95	>95

Here is a thick designed Grand Slam son with a very stylish phenotype. Along with a milk heavy pedigree, TREF Lakeside totes an EPD profile with a top 5% ranking for ribeye. The bottom line is, if you like your calves with a little more style—we think he'll do it.

CALVING EASE: EE



18-MONTH-OLD BULLS

18-MONTH-OLD BULLS • LOTS 14 — 20

We have a powerful set of 18-month-old bulls that are ready to be turned out and get to work this spring. They offer a balanced set of traits, are chock-full of muscle and bred to pack on the pounds in your calf crop come weaning time. Study them visually and numerically, and we know you'll find one to fit your needs.



LOT
14



LOT 14



TREF DAKOTA DIXIE 283D • Dam of Lot 14



TREF KOMBAT 283K

PUREBRED(94/87.2) BULL • HOMO POLLED (P-1) • HET BLACK (T)
08/10/2022 • TREF 283K • NPM2527416

SYES EASY GOING 77E
TREF GUNPOWDER 290G
TREF DAKOTA LOVE 290D

TREF ZEUS 232Z
TREF DAKOTA DIXIE 283D
TREF TINY GIRL 384T

COLE BUSINESSMAN 104B
MISS SYES RANSOM 76X
TREF ZEUS 232Z
TREF ADDIE 912A

ROMN TOW TRUCK 111T
TREF RED WINE 232R
TREF RIFLE 906R
TREF ROXIE 108R

ACT BW
85
ADJ WW
762

	CE	BW	WW	YW	MK	TM	CM	SC	DC	YC	CW	RE	MB	\$MTI
EPDS	6	0.7	60	92	27	57	6	.82	16	-.49	39	1.21	-.10	49
%Rank	90	40	70	65	30	50	50	25	15	40	10	25	75	75

Retaining 1/2 Interest

This Gunpowder son has herd bull stamped on him. Like all the offspring of his heavy milking Zeus dam, he is in a class of one, himself. Her two sons have averaged 869 lbs. at weaning with an index of 112. Kombat is long bodied, deep in his rib and carrying plenty of meat down his quarter. If you're looking for a bull to add some big-time performance to his calves and make your Angus neighbors drool, then this is your guy. Our original plan was to keep him to ourselves but have decided to offer him at auction with the hope of retaining an ownership possession.

CALVING EASE: EE
F94L MYOSTATIN 2

GE-EPDS

18-MONTH-OLD BULLS



15

TREF KODA 491K

PUREBRED(93/90.1) BULL · HOMO POLLED (P-1) · RED
08/22/2022 · TREF 491K · NPM2527417

SYES EASY GOING 77E
TREF GUNPOWDER 290G
TREF DAKOTA LOVE 290D

JYF YIELDMASTER 80Y
TREF FLICKER 491F
TREF ALWAYS SWEET 991A

COLE BUSINESSMAN 104B
MISS SYES RANSOM 76X
TREF ZEUS 232Z
TREF ADDIE 912A
TMF SYMBOL 188S
AIRLIE TARA
RICHMOND XANDER SRD 22X
TREF TEAPOT 316T

ACT BW
91

ADJ WW
743

	CE	BW	WW	YW	MK	TM	CM	SC	DC	YG	CW	RE	MB	\$MTI
EPDS	6	1.8	60	91	26	56	4	.33	14	-.53	14	1.11	-.09	49
%Rank	90	65	70	65	35	55	80	80	45	30	80	45	70	70

This bull draws you in when you enter the fall bull pen with his powerful look. He is heavy muscled, stout and very well-mannered like all of the Gunpowder sons and daughters have been. His dam is one of those "front pasture" brood cows. She has that extra volume, thick hindquarter, and a feminine front to her along with a flawless udder and an abundance of milk. She has given us a bull every year with an average weaning weight of 748 lbs. Be sure to watch for her 2023 fall Fantom son next year.

CALVING EASE: E



LOT 15



TREF FLICKER 491F · Dam of Lot 15



Full brother to Lot 15

18-MONTH-OLD BULLS



16

TREF KASANOVA 841K

PUREBRED(93/89.3) BULL · HOMO POLLED (P-2) · RED
09/20/2022 · TREF 841K · NPM2527419

SYES EASY GOING 77E
TREF GUNPOWDER 290G
TREF DAKOTA LOVE 290D

COLE BUSINESSMAN 104B
MISS SYES RANSOM 76X
TREF ZEUS 232Z
TREF ADDIE 912A

RICHMOND XANDER SRD 22X
TREF ZOPHIE 841Z
TREF TAWNY 341T

RPY PAYNES MARATHON 47U
RICHMOND TWIST SRD 22T
ROMN JUSTICE
TREF 340G

ACT BW
90

ADJ WW
647

	CE	BW	WW	YW	MK	TM	CM	SC	DC	YG	CW	RE	MB	\$MTI
EPDS	6	2.3	57	85	26	54	5	.6	15	-.52	13	1.04	-.16	46
%Rank	90	75	75	75	35	70	70	40	20	30	85	60	90	90

Here's a soft made, loose hided, yet abundantly muscled bull. His 12-year-old dam is one of the last Richmond Xander females we have left and she is still here for a good reason. Her daughter, TREF Cassie 177C, featured in Lot 2, is a donor and dam of some of our highest selling progeny. It's got to start somewhere, and it started with the 841 cow. Get it straight from the factory with Kasanova.

CALVING EASE: E



17

TREF KAMIKAZE 256K

PUREBRED(100/88.1) BULL · SCURRED · BLACK
08/25/2022 · TREF 256K · NPM2527415

SYES EASY GOING 77E
TREF GUNPOWDER 290G
TREF DAKOTA LOVE 290D

COLE BUSINESSMAN 104B
MISS SYES RANSOM 76X
TREF ZEUS 232Z
TREF ADDIE 912A

JYF YIELDMASTER 80Y
TREF DAKOTA ROSE 256D
TREF X-QUISITE 634X

TMF SYMBOL 188S
AIRLIE TARA
ROMN TOW TRUCK 111T
TREF 334G

ACT BW
73

ADJ WW
664

	CE	BW	WW	YW	MK	TM	CM	SC	DC	YG	CW	RE	MB	\$MTI
EPDS	10	-1.2	45	69	26	48	7	.45	15	-.57	7	1.08	-.09	45
%Rank	50	15	>95	95	35	90	35	70	20	20	95	50	70	95

A black, fall, calving ease bull with muscle galore. His added six months of age will give you a little more confidence and breeding power when you are looking for that bull to use on heifers. His red full brother was one of our high sellers last year going to Adam Davis. Notice Kamikaze's top 15% ranking for birth weight and top 20% ranking for both docility and yield grade. This combination of presence and numbers project him to be the type of herd bull that produces well-balanced, polled, stout calves year in and year out.

CALVING EASE: EEE



18

TREF KALIBER 564K

PUREBRED(100/90.8) BULL · HOMO POLLED (T) · RED
09/18/2022 · TREF 564K · NPM2527418

SYES EASY GOING 77E
TREF GUNPOWDER 290G
TREF DAKOTA LOVE 290D

COLE BUSINESSMAN 104B
MISS SYES RANSOM 76X
TREF ZEUS 232Z
TREF ADDIE 912A

JBK MONTANA 680M
TREF WIND CHIME 564W
TREF 565J

DEVONS THE REAL DEAL
JBK ORNAMENT 640G
WULFS DAMON 0332D
TREF DELTA DAWN 006D

ACT BW
95

ADJ WW
684

	CE	BW	WW	YW	MK	TM	CM	SC	DC	YG	CW	RE	MB	\$MTI
EPDS	6	3	50	72	24	49	2	.7	11	-.58	14	1.17	-.11	46
%Rank	90	85	90	90	55	90	95	30	75	15	80	30	75	90

Stemming from a pedigree rich with greatness and longevity comes this 13th consecutive calf from his dam, TREF Wind Chime. If you want them cherry red and bred for longevity, this is the guy. His dam went to a new home this fall with her Fantom calf that is showing lots of potential. Be sure you are on the right side of the last bid on TREF Kaliber 564K.

CALVING EASE: E

18-MONTH-OLD BULLS



19

KLIFF HANGER 303K ET

PUREBRED(100/89.8) BULL · HOMO POLLED (P-1) · RED
08/06/2022 · TREF 303K · NPM2797165

HUNT MR JOCK 44J
WULFS AMAZING BULL T341A
WULFS ULTRA DIAMOND 8571U

LVLS POLLED JUSTICE 0601E
HUNT MISS GIGGLE 129G
JLWM DIRE STRAYTS 4109P
WULFS NICHOLA 3279N

ROMN TOW TRUCK 111T
TREF YAKIRA 766Y
TREF SASHA 266S

WULFS RANSOM 3059R
ROMN RITA 28R
JBAK MONTANA 680M
TREF 466H

ACT BW
82
ADJ WW
709

	CE	BW	WW	YW	MK	TM	CM	SC	DC	YG	CW	RE	MB	\$MTI
EPDS	7	2	60	94	34	64	4	1.55	12	-.57	12	1.13	-.29	42
%Rank	80	70	70	60	2	15	80	3	70	20	90	40	>95	>95

This herd sire prospect is an absolute eye-catcher. This polled purebred ranks in the top 2% for milk, top 3% for scrotal, top 15% for total maternal and top 20% for yield grade. He is an ET calf out of Wulfs Amazing and our original donor cow, TREF Yakira. He should be the bull to make a great set of cows from. If you're looking for a purebred bull that combines muscle and a balanced EPD profile, there's little need to look further than this stud right here.

CALVING EASE: E

20

TREF KOKOMO 915K

PUREBRED(87/90.4) BULL · SCURRED · BLACK
08/24/2022 · TREF 915K · NPM2527421

SYES EASY GOING 77E
TREF GUNPOWDER 290G
TREF DAKOTA LOVE 290D

COLE BUSINESSMAN 104B
MISS SYES RANSOM 76X
TREF ZEUS 232Z
TREF ADDIE 912A

VL YES MAN 111Y
TREF AUBURN 915A
TREF UNANIMOUS 414U

RUNL TRAVIS 332T
VL TOLD YA SO
ROMN JUSTICE

ACT BW
68
ADJ WW
649

	CE	BW	WW	YW	MK	TM	CM	SC	DC	YG	CW	RE	MB	\$MTI
EPDS	14	-2.9	45	68	22	44	8	.55	16	-.51	8	.89	-.2	40
%Rank	20	3	>95	95	75	95	25	60	15	35	95	85	95	>95

This guy is explosive in his hindquarter and top line. Gunpowder has been stamping his calves with consistency and this one has all the attributes of his sire. Aside from this bull's impressive muscle expression, he ranks in the top 3% for birth weight, top 15% for docility and top 20% for calving ease. It would be interesting to see what a bull like this can do on a set of Angus cows. I can assure you—it will be impressive.

CALVING EASE: EEE

2-YEAR-OLD BULLS

2-YEAR-OLD BULLS • LOTS 21 — 24

There are very few two year old purebred Limousin bulls in the country.
Here's your opportunity to get one and cover twice as many cows as a yearling.



21

TREF KENYA 288K

PUREBRED(100/89.7) BULL • HET POLLED (T) • HET BLACK (T)
03/17/2022 • TREF 288K • NPM2493663

B BAR BENTLEY 8D
TREF HOTSHOT 345H
TREF EMMA LOU 345E

VL BRUISER 409B
TREF DAKOTA DELIGHT 288D
TREF ABILENE 911A

IVY'S BUBBA WATSON HTZ24B
B BAR WHISKEY GIRL
TREF COAL TRAIN 707C
TREF ABILENE 911A
WULFS YANKEE K689Y
RMKR UNEQUALED 812U
VL YES MAN 111Y
TREF TONI 311T

ACT BW
92

ADJ WW
689

ADJ YW
1109

	CE	BW	WW	YW	MK	TM	CM	SC	DC	YG	CW	RE	MB	\$MTI
EPDS	12	.1	58	84	30	59	7	.8	12	-.54	20	1.18	-.25	43
%Rank	30	30	75	80	15	40	35	25	70	25	65	30	>95	>95

Here's a long bodied 2-year-old with a lot of style as he struts around the bull pasture. His design and EPDs appear he should sire moderate birth weight calves. We think he'd really dress up some Angus-based cows. Bid with confidence!

SC: 32.3 UFAT: 0.28 UREA: 15.58 UIMF: 1.70
CALVING EASE: EE

22

TREF KOOL DUDE 066K

PUREBRED(100/91) BULL • HOMO POLLED (P-1) • RED
04/15/2022 • TREF 066K • NPM2493648

GV AUSTIN 701A
TOMV DIESEL 619D
MISS TOM 118Y

RICHMOND XANDER SRD 22X
TREF BUTTERFLY 066B
TREF PETITE 065P

CV X-MAN 701X
GV MISS LODESTAR 701T
WULFS WAGON TRAIN 3197W
MISS TOM 7106T

RPY PAYNES MARATHON 47U
RICHMOND TWIST SRD 22T
ROMN JUSTICE
TREF 565J

ACT BW
94

ADJ WW
610

ADJ YW
1178

	CE	BW	WW	YW	MK	TM	CM	SC	DC	YG	CW	RE	MB	\$MTI
EPDS	6	3.8	62	96	26	57	5	0	12	-.51	37	1.22	-.23	45
%Rank	90	95	60	55	35	50	70	95	70	35	10	20	>95	95

Kool Dude drew a lot of attention as a calf from visitors, but we wanted to hold his debut for 2024 because of his young age. He will be the last Diesel bull to come from our program. So, if you're looking for a bull that's going to add some stretch and frame, make them all polled and pleasant to be around, find him on February 10.

SC: 33.2 UFAT: 0.23 UREA: 14.86 UIMF: 1.45
CALVING EASE: E

2-YEAR-OLD BULLS



LOT
23



TREF BABY DOLL 034B • Dam of Lot 24



LOT
24

23

TREF KALAMAZOO 165K

PUREBRED(100/88.8) BULL • HET POLLED (T) • RED
03/09/2022 • TREF 165K • NPM2493657

TREF COAL TRAIN 707C
TREF GRAND SLAM 111C
TREF CHANEL 111C

TREF ZEUS 232Z
TREF CACEY 165C
TREF PETITE 065P

RPY PAYNES DERBY 46Z
TREF YESTERDAY 707Y
JYF YIELDMASTER 80Y
TREF WINDSWEEP 511W
ROMN TOW TRUCK 111T
TREF RED WINE 232R
ROMN JUSTICE
TREF 565J

ACT BW
88
ADJ WW
670
ADJ YW
1036

	CE	BW	WW	YW	MK	TM	CM	SC	DC	YG	CW	RE	MB	\$MTI
EPDS	11	1.3	49	68	31	56	7	.6	10	-.57	11	1.21	-.14	44
%Rank	40	55	95	95	10	55	35	40	85	20	90	25	85	95

Like his yearling brother that sells as Lot 34, Kalamazoo has that Limousin look, rich in tradition. He is a big, heavy hindquartered bull that will breed twice as many cows expected of a yearling. His dam is one our very best. This purebred red bull has worlds of potential that you will not want to miss sale day.

SC: 29.9 UFAT: 0.27 UREA: 15.92 UIMF: 1.47

CALVING EASE: EE

24

TREF KASIUS 034K

PUREBRED(100/91) BULL • HOMO POLLED (P-2) • RED
03/16/2022 • TREF 034K • NPM2493645

TREF COAL TRAIN 707C
TREF GRAND SLAM 111C
TREF CHANEL 111C

CF JIM DANDIE 216U
TREF BABY DOLL 034B
TREF WHISPER 534W

RPY PAYNES DERBY 46Z
TREF YESTERDAY 707Y
JYF YIELDMASTER 80Y
TREF WINDSWEEP 511W
EAFF POLLED HUMMER 530P
CF POLLED DANDIE 040P
WULFS RANSOM 3059R
TREF 734L

ACT BW
80
ADJ WW
678
ADJ YW
1135

	CE	BW	WW	YW	MK	TM	CM	SC	DC	YG	CW	RE	MB	\$MTI
EPDS	11	0	50	74	29	54	6	.3	8	-.62	10	1.37	-.16	44
%Rank	40	30	90	90	15	70	50	80	90	10	90	10	90	95

Kasius is a homozygous polled, Purebred son of TREF Grand Slam out of a picture-perfect Jim Dandi daughter that catches the eyes of our visitors. He is smooth in his makeup and could be a choice to use on heifers. Kasius will be a knockout in your program with his light birth weight, top-ranking milk and added carcass traits. This guy set the bar high and deserves some serious attention.

SC: 32.2 UFAT: 0.36 UREA: 17.46 UIMF: 1.53

CALVING EASE: EE

YEARLING BULLS



LOT
25



LOT 26 • Pictured as calf



LOT
26

25

TREF LANDMARK 522L

PUREBRED(100/89.7) BULL · HOMO POLLED (P-1) · HOMO BLACK (T)
03/10/2023 · TREF 522L · NPM2567137

BALAMORE ENDEAVOR 701E
BALAMORE HERSHEY 0120H
CLARKS EXTRAVAGANT KISS

RLF YARDLEY 601Y
CLARKS AFFECTIVE KISS
CLARKS BLOCKBUSTER
DKC UNFORGETTABLE KISS

WULFS CAPER 3303C
TREF GIRLFRIEND 522G
TREF ANNABELLA 922A

KORC WULFS SNOW PRINCE
WULFS ARMADA 3303A
RICHMOND XANDER SRD 22X
TREF SENSATIONAL 222S

ACT BW
93
ADJ WW
703

	CE	BW	WW	YW	MK	TM	CM	SC	DC	YG	CW	RE	MB	\$MTI
EPDS	8	1.2	67	96	26	60	6		13	-.65	18	1.36	-.23	47
%Rank	70	50	45	55	35	35	50		60	3	70	10	>95	85

This easy-going bull has the looks, the performance, and comes in a homo polled, homo black package! His young dam has been very consistent and raised a high seller as a heifer in our 2023 sale. His grand dam is in our fall program and still cranks out a great heifer every year. Note Landmark's top 3% rank for yield grade. Keep him on your short list on sale day!

CALVING EASE: EE
F94L MYOSTATIN 2

26

TREF LANDMINE 525L

PUREBRED(100/91.4) BULL · HOMO POLLED (P-2) · BLACK
03/11/2023 · TREF 525L · NPM2567139

RICHMOND CRUSADER SRD 53C
RICHMOND FANTOM SRD 102F
RICHMOND BLUSH SRD 93D

RICHMOND ZODIAC SRD 29Z
RICHMOND ZANDY SRD 49Z
RICHMOND BLACKOUT SRD 10B
RICHMOND BLUSH SRD 178B

TOMV DIESEL 619D
TREF GRACE 525G
TREF CUPCAKE 125C

GV AUSTIN 701A
MISS TOM 118Y
WULFS AMAZING BULL T341A
TREF YELLOW FLOWER 725Y

ACT BW
98
ADJ WW
723

	CE	BW	WW	YW	MK	TM	CM	SC	DC	YG	CW	RE	MB	\$MTI
EPDS	5	4.3	72	110	27	63	3	.55	15	-.57	37	1.38	-.3	46
%Rank	95	>95	25	20	30	20	90	60	20	20	10	5	>95	90

Here is a homozygous polled black bull that screams "herd bull prospect"! We added his sire, Richmond Fantom, to our program to add some mass, bone and foot structure. Here he did that, plus some! Recognize that aside from Landmine's appealing muscle and angularity, he comes to you with a well-balanced EPD profile that includes a top 5% ranking for ribeye. The bottom line is, if you like your calves thicker, stouter, and heavier—we think he'll do it.

CALVING EASE: E
F94L MYOSTATIN 2

"What I've noticed is every calf born out of a TREF female is bigger and more eye appealing as a calf at weaning time than our others! I used to think you could just use a good bull to make decent calves. But...It's not the case."

Ryan Reed

YEARLING BULLS



27

TREF LITHIUM 575L

PERCENTAGE(85/77.5) BULL · HOMO POLLED (P-1) · BLACK
04/04/2023 · TREF 575L · NXM2567144

SYES USER FRIENDLY 524U
DLVL FEATHERLITE 8138F
DLVL MISS RIPTIDE 929W

WULFS RANSOM 3059R
MISS SYES JUSTICE 224S
RMKR RIPTIDE 515R
TREF MISS 937N

TREF COAL TRAIN 707C
TREF GLITTER 575C
TREF ZOEY 875Z

RPY PAYNES DERBY 46Z
TREF YESTERDAY 707Y
JBV LOMBARDI 911W
TREF 475

ACT BW
88

ADJ WW
741

	CE	BW	WW	YW	MK	TM	CM	SC	DC	YG	CW	RE	MB	\$MTI
EPDS	10	1	56	80	28	56	4	.3	14	-.46	6	.87	-.12	46
%Rank	70	65	60	65	10	35	90	90	15	10	>95	35	>95	>95

Solid is what best describes TREF Lithium! A stout made, high performance black bull with a great design and disposition. This homozygous polled, black bull is sired by DLVL Featherlite 8138F. He ranks in the top 10% for both milk and yield grade, while also earning a top 15% ranking for docility. This solid, long bodied bull excels in muscle design. Make sure you are on the right side when the gavel falls for the last time.

CALVING EASE: EE

28

TREF LUMBERJACK 925L

PUREBRED(100/91.2) BULL · HOMO POLLED (P-1) · BLACK
03/25/2023 · TREF 925L · NPM2567180

RICHMOND CRUSADER SRD 53C
RICHMOND FANTOM SRD 102F
RICHMOND BLUSH SRD 93D

RICHMOND ZODIAC SRD 29Z
RICHMOND ZANDY SRD 49Z
RICHMOND BLACKOUT SRD 10B
RICHMOND BLUSH SRD 178B

JYF145X
TREF ARIAH 925A
TREF YELLOW FLOWER 725Y

TMF UPTOWN 618U
TMF MISS 226U
ROMN TOW TRUCK 111T
TREF 425 U

ACT BW
94

ADJ WW
641

	CE	BW	WW	YW	MK	TM	CM	SC	DC	YG	CW	RE	MB	\$MTI
EPDS	7	2.7	55	81	25	52	3	.4	14	-.55	25	1.16	-.23	43
%Rank	80	80	85	85	45	75	90	70	45	25	45	30	>95	>95

TREF Lumberjack is an attractively made, homozygous polled purebred. You'll admire him for his clean lines, wide top and muscle design. He is from a consistent 11-year-old cow that has never missed bringing in a good one and sired by Richmond Fantom SRD 102F. He will give calves the added muscle necessary to put dollars in your pocket come weaning time. Don't miss your shot!

CALVING EASE: E

YEARLING BULLS



LOT
29



Maternal brother to Lot 29



LOT
30

29

TREF LIONHEART 516L

PUREBRED(93/93.3) BULL · HOMO POLLED (T) · BLACK
04/17/2023 · TREF 516L · NPM2567135

RICHMOND CRUSADER SRD 53C
RICHMOND FANTOM SRD 102F
RICHMOND BLUSH SRD 93D

RICHMOND ZODIAC SRD 29Z
RICHMOND ZANDY SRD 49Z
RICHMOND BLACKOUT SRD 10B
RICHMOND BLUSH SRD 178B

TOMV DIESEL 619D
TREF GOLDEN GLIMMER 516G
TREF BLOOM 039B

CV AUSTIN 701A
MISS TOM 118Y
CF JIM DANDIE 216U
TREF PICTURESQUE 031P

ACT BW
88
ADJ WW
664

	CE	BW	WW	YW	MK	TM	CM	SC	DC	YG	CW	RE	MB	\$MTI
EPDS	8	3.4	68	103	29	63	5	.35	13	-.57	37	1.37	-.27	45
%Rank	70	90	40	40	15	20	70	80	60	20	10	10	>95	90

Bring on the young gun as this is the youngest bull in the sale. Using Fantom on this Lionheart's dam was a home run. His maternal brother was our high seller last year going to Doug Henley. Admire him for being solid in his makeup with added length of body, depth of rib and muscle shape. He struts his style and muscle as he moves around the bull pen. This is a can't miss opportunity for any breeder, purebred or commercial.

CALVING EASE: E
F94L MYOSTATIN 2

30

TREF LADY KILLER 1616L ET

PUREBRED(100/96.4) BULL · HOMO POLLED (P-1) · RED
03/02/2023 · TREF 1616L · NPM2608738

RICHMOND CRUSADER SRD 53C
RICHMOND FANTOM SRD 102F
RICHMOND BLUSH SRD 93D

RICHMOND ZODIAC SRD 29Z
RICHMOND ZANDY SRD 49Z
RICHMOND BLACKOUT SRD 10B
RICHMOND BLUSH SRD 178B

AR EXECUTIVE 7173E
AR HOOPLA FLO 090H
AR BOUNCY FLO 483B

AR COLONEL 531C
AR BEST MAE WEST 4102B
AR ZILLION 226Z
AR WIGGLE 9142W

ACT BW
93
ADJ WW

	CE	BW	WW	YW	MK	TM	CM	SC	DC	YG	CW	RE	MB	\$MTI
EPDS	6	3.2	51	75	25	50	3	.29	10	-.69	22	1.41	-.39	37
%Rank	90	90	90	90	45	85	90	90	85	1	55	4	>95	>95

Trying to raise that outcross bull that should be a fresh pedigree to most programs, we bring you Lady Killer. With the bone and mass of Fantom, combined with the sleek look and muscle of his fullblood dam, this ET calf was a mating that turned out like we had hoped for. Note his top 1% ranking for yield grade. This bull is totally kid proof and as gentle as any bull we have ever produced since he was born. Opportunity knocks!

CALVING EASE: E

GE-EPDS

"Every commercial cattleman is losing money if they are not using TREF bulls. The performance of the offspring in the feedyard is second-to-none. Treftz genetics, whether purebred or commercial, always bring our operation premiums on the grid."

Austin Bauer

YEARLING BULLS



AR HOOPLA FLO 090H • Dam of Lots 30 & 31



31

TREF LEGEND 1619L ET

PUREBRED(100/96.4) BULL • HOMO POLLED (P-1) • RED
03/04/2023 • TREF 1619L • NPM2608736

RICHMOND CRUSADER SRD 53C
RICHMOND FANTOM SRD 102F
RICHMOND BLUSH SRD 93D

RICHMOND ZODIAC SRD 29Z
RICHMOND ZANDY SRD 49Z
RICHMOND BLACKOUT SRD 10B
RICHMOND BLUSH SRD 178B

AR EXECUTIVE 7173E
AR HOOPLA FLO 090H
AR BOUNCY FLO 483B

AR COLONEL 531C
AR BEST MAE WEST 4102B
AR ZILLION 226Z
AR WIGGLE 9142W

ACT BW
97

ADJ WW

	CE	BW	WW	YW	MK	TM	CM	SC	DC	YG	CW	RE	MB	\$MTI
EPDS	9	4.3	52	79	25	51	5	.29	10	-.51	23	1.02	-.36	37
%Rank	60	>95	90	85	45	80	70	90	85	35	55	65	>95	>95

This memorable bull is a homozygous polled purebred. He ties his muscle shape nicely down into his quarter, is deep in his rib and flank, has a straight, strong top, and a nice, smooth shoulder. Very similar to his full ET brother with a touch more frame, very sound, and docile as can be. He comes in the cherry red deluxe package. His pedigree is excellent for many different scenarios and his EPDs come in a balanced package.

CALVING EASE: E

32

TREF LONE WOLF 553L

PUREBRED(100/89.3) BULL • DOUBLE POLLED • RED
04/04/2023 • TREF 553L • NPM2567142

TREF COAL TRAIN 707C
TREF GRAND SLAM 111G
TREF CHANEL 111C

RPY PAYNES DERBY 46Z
TREF YESTERDAY 707Y
JYF YIELDMASTER 80Y
TREF WINDSWEEP 511W

WULFS CAPER 3303C
TREF GLAMOUR GIRL 553G
TREF ABILENE 911A

KORC WULFS SNOW PRINCE
WULFS ARMADA 3303A
VL YES MAN 111Y
TREF TONI 311T

ACT BW
94

ADJ WW
698

	CE	BW	WW	YW	MK	TM	CM	SC	DC	YG	CW	RE	MB	\$MTI
EPDS	10	1.6	59	89	27	57	6	.57	11	-.54	21	1.23	-.2	45
%Rank	50	60	70	70	30	50	50	60	75	25	60	20	95	95

Lone Wolf is his name but that should not reflect his lifestyle. This red purebred bull deserves to be turned out with your very best set of cows. He is a mirror image of his sire, Grand Slam. He comes in a dark red, smooth, stylish, deep bodied package. He has plenty of muscle and is stout enough to run with the best of them. He'll work well in just about any program.

CALVING EASE: E

YEARLING BULLS



TREF BLING 091B • Dam of Lot 33



33

TREF LETHAL WEAPON 091L

PUREBRED(96/92.3) BULL • HOMO POLLED (P-1) • RED
03/10/2023 • TREF 091L • NPM2567098

RICHMOND CRUSADER SRD 53C
RICHMOND FANTOM SRD 102F
RICHMOND BLUSH SRD 93D

RICHMOND ZODIAC SRD 29Z
RICHMOND ZANDY SRD 49Z
RICHMOND BLACKOUT SRD 10B
RICHMOND BLUSH SRD 178B

CF JIM DANDIE 216U
TREF BLING 091B
TREF WATERFALL 591W

EAFF POLLED HUMMER 530P
CF POLLED DANDIE 040P
TREF RIFLE 906R
TREF 711L

ACT BW
90
ADJ WW
648

	CE	BW	WW	YW	MK	TM	CM	SC	DC	YG	CW	RE	MB	\$MTI
EPDS	7	2.9	54	76	27	54	4	.3	6	-.57	26	1.2	-.19	44
%Rank	80	85	85	90	30	70	80	80	95	20	40	25	95	95

A Fantom/Jim Dandi mating that really clicked. Unfortunately, we only have a handful of these aged Dandi cows left but what an impact they have left with their milking ability and Limousin look they stamp in their offspring. This deep bodied, massively muscled bull is a homozygous polled purebred. He is royally bred a deserves a long, hard look come sale day.

CALVING EASE: E

34

TREF LONE RIDER 165L

PUREBRED(100/88.8) BULL • SCURRED • RED
03/04/2023 • TREF 165L • NPM2567105

TREF COAL TRAIN 707C
TREF GRAND SLAM 111G
TREF CHANEL 111C

RPY PAYNES DERBY 46Z
TREF YESTERDAY 707Y
JYF YIELDMASTER 80Y
TREF WINDSWEEP 511W

TREF ZEUS 232Z
TREF CACEY 165C
TREF PETITE 065P

ROMN TOW TRUCK 111T
TREF RED WINE 232R
ROMN JUSTICE
TREF 565J

ACT BW
90
ADJ WW
695

	CE	BW	WW	YW	MK	TM	CM	SC	DC	YG	CW	RE	MB	\$MTI
EPDS	10	1.9	56	82	31	60	6	.6	10	-.53	23	1.23	-.13	47
%Rank	50	65	80	80	10	35	50	40	85	30	55	20	80	85

Looking for style, muscle and that traditional Limousin look? TREF Lone Rider is your man! His dam, TREF Zeus, is one of those no-miss cows that produces a great one every year. His full brother proves that, as he sells as Lot 24. Take note of this bulls top 10% ranking for milk and top 20% ribeye ranking. These are just added bonuses to his ample muscle and impeccable structure.

CALVING EASE: E

"It's been on my mind to reach out to you and just say...thank you. I've always appreciated your willingness to help me and the generosity you share in multiple ways. You're a good man, Glenn, and it's been a pleasure getting to know you through the years. Your great cattle are just a mechanism in which our friendship operates."

Joel Franseen

YEARLING BULLS



LOT 36 • Pictured as calf

35

TREF LASSO 204L

PUREBRED(96/88.7) BULL · SCURRED · RED
03/13/2023 · TREF 204L · NPM2567111

RICHMOND CRUSADER SRD 53C
RICHMOND FANTOM SRD 102F
RICHMOND BLUSH SRD 93D

RICHMOND ZODIAC SRD 29Z
RICHMOND ZANDY SRD 49Z
RICHMOND BLACKOUT SRD 10B
RICHMOND BLUSH SRD 178B

JYF YIELDMASTER 80Y
TREF DELANEY 204D
TREF TREASURE 304T

TMF SYMBOL 188S
AIRLIE TARA
ROMN JUSTICE
TREF 403H

ACT BW
84
ADJ WW
629

	CE	BW	WW	YW	MK	TM	CM	SC	DC	YG	CW	RE	MB	\$MTI
EPDS	9	1.1	53	80	25	51	4	.25	13	-.52	23	1.15	-.21	43
%Rank	60	50	85	85	45	80	80	90	60	30	55	35	95	>95

Another Richmond Fantom son here! TREF Lasso is a red purebred with an excellent look. His dam is our great TREF Delaney 204D. He has plenty of eye appeal to go with his clean lines and his explosive growth and muscle will impress you. He is a maternal brother to Hardcore. What more needs to be said?

CALVING EASE: E

36

TREF LASER 734L

PUREBRED(100/89.6) BULL · HOMO POLLED (T) · RED
03/06/2023 · TREF 734L · NPM2567169

GV X-MAN 343E
GV GRID IRON 862G
GV MS AMHERST 5517C

GV X-MAN 446Z
CV MISS GENERAL 864U
HUNT AMHERST 71A
CV MISS TUFF ENUFF 9910W

WULFS FIAT K683F ET
TREF JAZELLE 734J
TREF CACEY 165C

HUNT CREDENTIALS 37C ET
WULFS SOLOIST 6284S
TREF ZEUS 232Z
TREF PETITE 065P

ACT BW
89
ADJ WW
729

	CE	BW	WW	YW	MK	TM	CM	SC	DC	YG	CW	RE	MB	\$MTI
EPDS	12	2	70	97	32	67	8	.5	14	-.48	28	1.08	-.05	53
%Rank	30	70	30	50	5	10	25	60	45	45	35	50	60	50

A long bodied, thick son of Grid Iron out of a tremendous Wulfs Fiat heifer with a +39 Milk EPD. Another bull stacked with a deep maternal background that should produce an excellent set of functional females.

CALVING EASE: E
F94L MYOSTATIN 2

YEARLING BULLS



37

TREF LONG JOHN 710L

PUREBRED(87/80.1) BULL · HOMO POLLED (P-2) · RED
02/22/2023 · TREF 710L · NPM2567164

GV X-MAN 343E
GV GRID IRON 862G
GV MS AMHERST 5517C

GV X-MAN 446Z
GV MISS GENERAL 864U
HUNT AMHERST 71A
GV MISS TUFF ENUFF 9910W

TOMV DIESEL 619D
TREF JOSIE 710J
TREF BRYNN 075B

GV AUSTIN 701A
MISS TOM 118Y
CFJIM DANDIE 216U
TREF 475

	CE	BW	WW	YW	MK	TM	CM	SC	DC	YG	CW	RE	MB	\$MTI
EPDS	8	3.5	76	113	27	64	7	.3	12	-.55	30	1.27	-.06	55
%Rank	70	95	15	15	30	15	35	80	70	25	30	15	60	35

We thought enough of the potential of this bull's dam to flush her as an open heifer and as an indication of the bulls it produced in the first pen, it was a great decision. We felt Long John was a fitting name for the length of body this bull possesses. He is smooth bodied, clean fronted, and has a nice disposition. With his pedigree and growth EPDs, he should sire calves that will add pounds to a calf crop.

CALVING EASE: E
F94L MYOSTATIN 2

38

TREF LUCKY CHARM 042L

PUREBRED(100/89.4) BULL · DOUBLE POLLED · RED
03/14/2023 · TREF 042L · NPM2567096

TOMV DIESEL 619D
TREF HARDCORE 204H
TREF DELANEY 204D

GV AUSTIN 701A
MISS TOM 118Y
JYF YIELDMASTER 80Y
TREF TREASURE 304T

JYF ZEEK 151Z
TOMV MISS ZEEK 042H
TOMV MISS BUD ICE 731E

AHCC WOOD MOUNTAIN W796
TMF MISS 627T
DLVL BUD ICE 4112B
MISS TOM 104Y

	CE	BW	WW	YW	MK	TM	CM	SC	DC	YG	CW	RE	MB	\$MTI
EPDS	9	1.6	66	107	28	62	7	.2	13	-.61	31	1.48	-.18	49
%Rank	60	60	45	30	20	25	35	90	60	10	25	2	90	75

Here is the last of the Hardcore sons in the sale. Like the rest of his brothers, he got a great disposition from both his sire and dam and would be an asset to a herd that wants to build a great foundation of cows. He totes a balanced EPD profile with a top 2% ranking for ribeye. This bull will impress you on sale day.

CALVING EASE: EE



TREF JOSIE 710J · Dam of Lot 37

Treftz Limousin— “Where Muscle Still Matters”

We understand most of our customers want to take as many pounds to the sale barn as possible. With that in mind, we make a concentrated effort to breed for pounds and performance. The key to producing those pounds is increased muscling. Our ultrasound results over the last seven years illustrate our selection pressure for muscling is paying dividends.

YEAR	REA
2012	15.5
2013	16.9
2014	16.4
2015	16.4
2016	16.2
2017	16.1
2018	16.5
2019	15.9
2020	16.1
2021	16.2
2022	16.4
2023	16.3
Average	16.2

YEARLING BULLS

39

TREF LOAD UP 497L

PUREBRED(94/86) BULL · HOMO POLLED (P-1) · RED
04/07/2023 · TREF 497L · NPM2567130

TREF COAL TRAIN 707C
TREF GRAND SLAM 111C
TREF CHANEL 111C

COLE DAZZLE 74D
TREF FERGIE 497F
TREF CASSIE 177C

RPY PAYNES DERBY 46Z
TREF YESTERDAY 707Y
JYF YIELDMASTER 80Y
TREF WINDSWEEP 511W

COLE ARCHITECT 08A
COLE MISS NASA 006X
TREF ZEUS 232Z
TREF ZOPHIE 841Z

ACT BW
97

ADJ WW
700

	CE	BW	WW	YW	MK	TM	CM	SC	DC	YG	CW	RE	MB	\$MTI
EPDS	7	3	65	100	28	61	3	.72	10	-.46	30	1.23	-.12	49
%Rank	80	85	50	45	20	30	90	30	85	55	30	20	80	70

This bull is a descendant of a very predictable cow family. The dam to this bull is a direct daughter of TREF Cassie, the dam of Lot 2. He is a homozygous polled purebred with a stacked pedigree. We predict he will do great things for the winning bidder!

CALVING EASE: E

40

TREF LAMBERT 709L

PUREBRED(100/90.2) BULL · HOMO POLLED (P-2) · RED
02/19/2023 · TREF 709L · NPM2567163

GV X-MAN 343E
GV GRID IRON 862G
GV MS AMHERST 5517C

B BAR BENTLEY 8D
TREF JALISSA 709J
TREF GRACIE 592G

GV X-MAN 446Z
GV MISS GENERAL 864U
HUNT AMHERST 71A
GV MISS TUFF ENUFF 9910W

IVY'S BUBBA WATSON HTZ24B
B BAR WHISKEY GIRL
RPY PAYNES DIESEL 37D
TREF CHARLOTTE 192C

ACT BW
84

ADJ WW
638

	CE	BW	WW	YW	MK	TM	CM	SC	DC	YG	CW	RE	MB	\$MTI
EPDS	10	2.2	69	100	23	57	7	.64	14	-.49	28	1.18	-.2	48
%Rank	50	70	35	45	65	50	35	40	45	45	35	30	95	80

Even though his birth EPD doesn't totally reflect it, Lambert should be a relatively calving ease bull with his moderate actual birth weight as well as Grid Iron and Tuff Enuf on the top side and Bentley on the bottom side. He is long bodied and well-mannered like all the Grid Irons. Raised and born unassisted out of a first calf heifer.

CALVING EASE: E

41

TREF LOOKOUT 597L

PUREBRED(100/89) BULL · HOMO POLLED (P-1) · RED
04/04/2023 · TREF 597L · NPM2567148

WULFS CAPER 3303C
TREF EZ STREET 107E
TREF COCOA BEAN 107C

WULFS AMAZING BULL T341A
TREF GRETA 597G
TREF ADDISON 997A

KORC WULFS SNOW PRINCE
WULFS ARMADA 3303A
DLVL AEROSMITH 329A
TREF ASIA 907A

HUNT MR JOCK 44J
WULFS ULTRA DIAMOND 8571U
RICHMOND XANDER SRD 22X
TREF X-QUISITE 634X

ACT BW
97

ADJ WW
740

	CE	BW	WW	YW	MK	TM	CM	SC	DC	YG	CW	RE	MB	\$MTI
EPDS	7	2.2	68	94	32	66	7	1.12	14	-.61	19	1.31	-.12	51
%Rank	80	70	40	60	5	10	35	10	45	10	65	10	80	60

If you're looking to build a herd of maternally strong females, here's your guy. Both sides of his pedigree are full of sires and dams boasting Milk EPDs of 30+.

CALVING EASE: E

42

TREF LOTTERY 590L

PUREBRED(87/78.8) BULL · HOMO POLLED (P-1) · RED
03/13/2023 · TREF 590L · NPM2567146

WULFS CAPER 3303C
TREF EZ STREET 107E
TREF COCOA BEAN 107C

J BAR J EXCLUSIVE 704E ET
TREF GINGER 590G
TREF EXOTIC 390E

KORC WULFS SNOW PRINCE
WULFS ARMADA 3303A
DLVL AEROSMITH 329A
TREF ASIA 907A

WULFS CLAIM K817C ET
LIMOLYN XILDA
WR MR ABOVE & BEYOND 2502
TREF BRIAR ROSE 090B

ACT BW
90

ADJ WW
656

	CE	BW	WW	YW	MK	TM	CM	SC	DC	YG	CW	RE	MB	\$MTI
EPDS	10	-.4	57	79	31	59	8	.55	15	-.48	15	1.01	-.01	51
%Rank	50	25	75	85	10	40	25	60	20	45	80	65	45	65

With three sires in his pedigree that were used as heifer bulls over the years in our program, we're thinking Lottery might be able to punch that ticket as well.

CALVING EASE: EE

43

TREF LONG SHOT 761L

PUREBRED(87/81.1) BULL · HOMO POLLED (T) · RED
03/08/2023 · TREF 761L · NPM2567103

GV X-MAN 343E
GV GRID IRON 862G
GV MS AMHERST 5517C

WULFS EASTERN 5002E
AR JEMS WEST MAE 1126J
AR GO WEST MAE 970G

GV X-MAN 446Z
GV MISS GENERAL 864U
HUNT AMHERST 71A
GV MISS TUFF ENUFF 9910W

BIEBER DEEP END B597
WULFS C MINOR 5002C
AR COLONEL 531C
AR ADELIN MAE 327A

ACT BW
81

ADJ WW
668

	CE	BW	WW	YW	MK	TM	CM	SC	DC	YG	CW	RE	MB	\$MTI
EPDS	11	2.1	62	93	25	56	8	.88	13	-.5	24	1.05	-.01	52
%Rank	40	70	60	60	45	55	25	25	60	40	50	55	45	55

Long Shot brings a little bit different twist to the table with Bieber Deep End and fullblood genetics on the maternal side of his pedigree. He was raised by a first calf heifer.

CALVING EASE: EE

"Glenn, you raise some mighty great breeding animals as they continue to stretch across the North American continent! I, for one and I believe others, agree that your program has exclusively improved our program as well as theirs. Thank you and your family for your dedication and continued support. Hope to see you on the second Saturday of February."

Joe Foran

BRED HEIFERS

BRED HEIFERS • LOTS 44 — 50

The bred heifer portion of our sale consists of 7 registered females that are iconic of our program. In short, they represent what our program is about. These females are bred and developed to be mainstays in a herd. As you will notice, they are backed by the same sire and dam power as their herd mate brothers featured in this catalog. These are the kind of females you'll find roaming our pastures, so we know they will work in yours.



LOT
44



TREF ALEXANDRIA 984A • Dam of Lot 44



TREF DAKOTA GIRL 292D
Dam of Lot 45



Maternal brother to Lot 45



LOT
45

44

TREF KATIE JO 842K

PUREBRED(100/88.3) COW • DOUBLE POLLED • RED
03/22/2022 • TREF 842K • NPF2493735

TREF COAL TRAIN 707C
TREF GRAND SLAM 111C
TREF CHANEL 111C

TOMV YELLOWSTONE 153Y
TREF ALEXANDRIA 984A
TREF TINY GIRL 384T

RPY PAYNES DERBY 46Z
TREF YESTERDAY 707Y
JYF YIELDMASTER 80Y
TREF WINDSWEEP 511W

SYES USER FRIENDLY 524U
MISS TOM 407P
TREF RIFLE 906R
TREF ROXIE 108R

ACT BW
81
ADJ WW
575

	CE	BW	WW	YW	MK	TM	CM	SC	DC	YG	CW	RE	MB	\$MTI
EPDS	11	-.6	49	77	31	56	6	.6	12	-.51	20	1.18	-.13	44
%Rank	40	20	95	85	10	55	50	40	70	35	65	30	80	95

A broody and deep bodied heifer with a great disposition. Her dam, TREF Alexandria 984A, was in our donor group and left us some very maternal daughters. Kati Jo herself ranks in the top 10% for Milk, carrying on her mom's legacy.

Due 4/23/2024 to JBV Milestone 206K

45

TREF KIRA 825K

PUREBRED(100/89.7) COW • DOUBLE POLLED • DOUBLE BLACK
03/14/2022 • TREF 825K • NPF2493664

B BAR BENTLEY 8D
TREF HOTSHOT 345H
TREF EMMA LOU 345E

TREF ZEUS 232Z
TREF DAKOTA GIRL 292D
TREF ALLELUIA 900A

IVY'S BUBBA WATSON HTZ24B
B BAR WHISKEY GIRL
TREF COAL TRAIN 707C
TREF ABILENE 911A

ROMN TOW TRUCK 111T
TREF RED WINE 232R
TOMV YELLOWSTONE 153Y
TREF WONDERFUL 500W

ACT BW
82
ADJ WW
536

	CE	BW	WW	YW	MK	TM	CM	SC	DC	YG	CW	RE	MB	\$MTI
EPDS	13	.8	62	95	31	62	8	.8	13	-.51	32	1.2	-.17	47
%Rank	25	45	60	55	10	25	25	25	60	35	25	25	90	85

Kira is a big volumed Hotshot daughter that is stacked with milk in her pedigree with a +31 Milk EPD herself. Nothing else matters if a female doesn't start off with ample milk. Along with her low birth weight EPD and mated to our calving ease specialist Hershey, she could raise you that black, heifer producing bull.

Due 4/2/2024 to Balamore Hershey 0120H.

BRED HEIFERS



LOT
46



LOT
47

46

TREF KAMILLA 832K

PUREBRED(100/90.5) COW · HOMO POLLED (P-1) · RED
03/19/2022 · TREF 832K · NPF2493703

SYES USER FRIENDLY 524U
DLVL FEATHERLITE 8138F
DLVL MISS RIPTIDE 929W

RPY PAYNES DIESEL 37D
TREF GRACIE 592G
TREF CHARLOTTE 192C

WULFS RANSOM 3059R
MISS SYES JUSTICE 224S
RMKR RIPTIDE 515R
TREF MISS 937N

COLE ARCHITECT 08A
EMF POLL ZILL
RPY PAYNES DERBY 46Z
TREF ZAZU 892Z

ACT BW
82

ADJ WW
532

	CE	BW	WW	YW	MK	TM	CM	SC	DC	YG	CW	RE	MB	\$MTI
EPDS	9	1.7	56	79	22	50	2	.38	15	-.43	13	.92	-.18	44
%Rank	60	60	80	85	75	85	95	80	20	65	85	80	90	95

We have admired the looks of this dark red heifer since she was a small calf and I never thought I would part with her, but here she is. She has that brood cow look with a deep chest, ease of flesh, and just the right amount of muscle for a female.

Due 4/12/2024 to Wulfs Klose Kall T281K.

47

TREF JAYLENE 771J

PUREBRED(87/85.3) COW · HOMO POLLED (P-3) · RED
09/18/2021 · TREF 771J · NPF2451054

KORC WULFS SNOW PRINCE
WULFS CAPER 3303C
WULFS ARMADA 3303A

TREF RIFLE 906R
TREF 482U
TREF SUPER GIRL 282S

RUNL STETSON 850S
VL SNOW PRINCESS
WULFS WALTOTT F711W
WULFS SOLOIST 6284S

COLE WOLF HUNT
TREF MISS 906N
JBAK MONTANA 680M

ACT BW
78

ADJ WW
569

	CE	BW	WW	YW	MK	TM	CM	SC	DC	YG	CW	RE	MB	\$MTI
EPDS	8	1.6	59	85	27	56	7	1	14	-.52	18	1.07	-.16	46
%Rank	70	60	70	75	30	55	35	10	45	30	70	50	90	90

This big 2 ½ year-old, bred heifer has a little extra age which we have found is beneficial on getting them bred back after their first calf. She carries the service of our popular EZ Street bull. Her dam raised us several high selling bulls back in the day rewarding her a three time Focus dam status.

Due 3/7/2024 to TREF EZ Street 107E

BRED HEIFERS



LOT
48

48

TREF KELANI 805K

PUREBRED(100/88.7) COW · HOMO POLLED (P-3) · DOUBLE BLACK
02/22/2022 · TREF 805K · NPF2493651

LFLC DENVER 857D
WULFS HANDIWORK T027H
TECS DELUX 1644D

WULF'S ZIPLOCK N922Z
LFLC ANNABELLE 857A
WULFS AMAZING BULL T341A
TECS AIRYANNA 1393

RUNL STETSON 850S
TREF BUBBLES 092B
TREF ZAZU 892Z

JCL LODESTAR 27L
RUNL 72L
SYES USER FRIENDLY 524U
TREF WHY NOT 592W

ACT BW
84

ADJ WW
442

	CE	BW	WW	YW	MK	TM	CM	SC	DC	YG	CW	RE	MB	\$MTI
EPDS	10	.9	60	88	20	50	7	.95	16	-.52	15	1.02	-.29	42
%Rank	50	45	70	70	90	85	35	15	15	30	80	65	>95	>95

We loved the look, the pedigree, the EPDs, and the raw data on this heifer's sire, Wulfs Handiwork, so we decided to use him. She is homo polled, double black and bred to the homo black, homo polled, Hershey. So, almost a sure thing her calf will be double homozygous.

Due 3/17/2024 to Balamore Hershey 0120H.



LOT
49

49

TREF KIT KAT 829K

PUREBRED(100/89.7) COW · DOUBLE POLLED · RED
03/15/2022 · TREF 829K · NPF2493705

GV X-MAN 343E
GV GRID IRON 862G
GV MS AMHERST 5517C

GV X-MAN 446Z
GV MISS GENERAL 864U
HUNT AMHERST 71A
GV MISS TUFF ENUFF 9910W

B BAR BENTLEY 8D
TREF HARLOW 602H
TREF ALEXANDRIA 984A

IVY'S BUBBA WATSON HTZ24B
B BAR WHISKEY GIRL
TOMV YELLOWSTONE 153Y
TREF TINY GIRL 384T

ACT BW
69

ADJ WW
553

	CE	BW	WW	YW	MK	TM	CM	SC	DC	YG	CW	RE	MB	\$MTI
EPDS	14	-1.3	61	88	27	58	9	.62	14	-.51	25	1.17	-.18	46
%Rank	20	15	65	70	30	45	15	40	45	35	45	30	90	90

Harlow is another heifer that has a pedigree full of calving ease specialists we have heavily used over the years. She has breed leading EPDs for calving ease and birth weight. So, if you looking to raising your own heifer bulls, she could be the one.

Due 4/17/2024 to JBV Milestone 206K



LOT
50

50

TREF KIARA 823K

PUREBRED(100/90.2) COW · HOMO POLLED (P-3) · RED
03/14/2022 · TREF 823K · NPF2493713

GV X-MAN 343E
GV GRID IRON 862G
GV MS AMHERST 5517C

GV X-MAN 446Z
GV MISS GENERAL 864U
HUNT AMHERST 71A
GV MISS TUFF ENUFF 9910W

TOMV DIESEL 619D
TREF HOMECOMING QUEEN 630H
TREF ELANA 318E

GV AUSTIN 701A
MISS TOM 118Y
ROMN TOW TRUCK 111T
TREF CLEMENTINE 106C

ACT BW
63

ADJ WW
521

	CE	BW	WW	YW	MK	TM	CM	SC	DC	YG	CW	RE	MB	\$MTI
EPDS	12	-.8	60	90	26	56	9	.33	14	-.54	26	1.22	-.14	48
%Rank	30	20	70	65	35	55	15	80	45	25	40	20	85	80

It was tough parting with this top-end daughter of Grid Iron and bred to our new bull, JBV Milestone, but we want to offer a piece of our herd. She is backed by several bulls in her pedigree that helped put our program on the map.

Due 3/15/2024 to JBV Milestone 206K

OPEN YEARLING HEIFERS

OPEN YEARLING HEIFERS • LOTS 51A — 57B

Our replacement heifers get no creep feed and this year were weaned November 1. They were sorted off 2 months before the sale and given a little more grain than their contemporaries. We don't let our heifers get "addicted" to corn. They're expected to get the job done without much supplementation when they become cows. If you're in the game to produce the kind of bulls we've become known for, these are the type of TREF females that will take you to that level. They've been paired to be evenly matched by pedigree, frame, and/or color. Selling choice or take them both. As before, we will offer free semen on any bull in our battery to breed them.



LOT
51A



LOT
51B

51a

TREF LOLA 905L

PUREBRED(100/89.7) COW • HOMO POLLED (P-3) • DOUBLE BLACK
02/26/2023 • TREF 905L • NPF2567094

RICHMOND CRUSADER SRD 53C
RICHMOND FANTOM SRD 102F
RICHMOND BLUSH SRD 93D

RUNL STETSON 850S
TREF BASIL 012B
TREF YELLOW JELLO 712Y

RICHMOND ZODIAC SRD 29Z
RICHMOND ZANDY SRD 49Z
RICHMOND BLACKOUT SRD 10B
RICHMOND BLUSH SRD 178B
JCL LODESTAR 27L
RUNL 72L
LVLS TOP CRITERIA 8862P
TREF WISHBONE 512W

ACT BW
88
ADJ WW
545
ADJ YW
907

	CE	BW	WW	YW	MK	TM	CM	SC	DC	YG	CW	RE	MB	\$MTI
EPDS	6	3	59	84	21	51	3	.35	5	-.57	23	1.22	-.24	44
%Rank	90	85	70	80	85	80	90	80	95	20	55	20	>95	95

51b

TREF LIZA 921L

PUREBRED(100/91.5) COW • HOMO POLLED (P-3) • RED
03/08/2023 • TREF 921L • NPF2567109

RICHMOND CRUSADER SRD 53C
RICHMOND FANTOM SRD 102F
RICHMOND BLUSH SRD 93D

RPY PAYNES DERBY 46Z
TREF CHARLOTTE 192C
TREF ZAZU 892Z

RICHMOND ZODIAC SRD 29Z
RICHMOND ZANDY SRD 49Z
RICHMOND BLACKOUT SRD 10B
RICHMOND BLUSH SRD 178B
KAJO RESPONDER 120R
IVY'S POLLED PRINCESS 1P
SYES USER FRIENDLY 524U
TREF WHY NOT 592W

ACT BW
87
ADJ WW
562
ADJ YW
978

	CE	BW	WW	YW	MK	TM	CM	SC	DC	YG	CW	RE	MB	\$MTI
EPDS	9	2.3	59	89	24	54	3	.55	12	-.51	31	1.11	-.23	44
%Rank	60	75	70	70	55	70	90	60	70	35	25	45	>95	>95

We are starting the open heifers with a couple of classy Fantom daughters out of two, older proven cows that we felt strongly enough to put in our donor pen. Their progeny have left a big influence on our herd and others. Our high selling black bull of 2023, TREF Kansas 1607K ET, is a maternal brother to TREF 905L and sold to Red Oak Farms of Australia. Either, or both, will be a great asset to your operation.

OPEN YEARLING HEIFERS



LOT
52A



LOT
52B

52a

TREF LAINEY 909L

PUREBRED(96/89.9) COW · DOUBLE POLLED · BLACK
03/01/2023 · TREF 909L · NPF2567101

BALAMORE ENDEAVOR 701E
BALAMORE HERSHEY 0120H
CLARKS EXTRAVAGANT KISS

JYF YIELDMASTER 80Y
TREF CHANEL 111C
TREF WINDSWEPT 511W

RLF YARDLEY 601Y
CLARKS AFFECTIVE KISS
CLARKS BLOCKBUSTER
DKC UNFORGETTABLE KISS
TMF SYMBOL 188S
AIRLIE TARA
ROMN TOW TRUCK 111T
TREF SCARLET 310G

ACT BW
74
ADJ WW
546
ADJ YW
877

	CE	BW	WW	YW	MK	TM	CM	SC	DC	YG	CW	RE	MB	\$MTI
EPDS	11	-2.2	51	73	24	49	8		14	-61	8	1.18	-17	44
%Rank	40	5	90	90	55	90	25		45	10	95	30	90	95

52b

TREF LITTLE PRINCESS 937L

PUREBRED(100/90.2) COW · DOUBLE POLLED · DOUBLE BLACK
03/26/2023 · TREF 937L · NPF2567124

BALAMORE ENDEAVOR 701E
BALAMORE HERSHEY 0120H
CLARKS EXTRAVAGANT KISS

WULFS CAPER 3303C
TREF FRENCH KISS 451F
RMKR CHOCOLATE CHIP 503C

RLF YARDLEY 601Y
CLARKS AFFECTIVE KISS
CLARKS BLOCKBUSTER
DKC UNFORGETTABLE KISS
KORC WULFS SNOW PRINCE
WULFS ARMADA 3303A
DLVL XEROX 023X
RMKR ADRIENNE 366A

ACT BW
86
ADJ WW
586
ADJ YW
813

	CE	BW	WW	YW	MK	TM	CM	SC	DC	YG	CW	RE	MB	\$MTI
EPDS	10	0	65	96	23	56	8		15	-.59	17	1.14	-.26	45
%Rank	50	30	50	55	65	55	25		20	15	75	35	>95	95

These are the first two Balamore Hershey heifer calves to sell in the U.S. We imported this outcross, double homozygous bull for obvious reasons when we first saw the bull and met the people. A bonus we weren't expecting was the calving ease that came with the total package. We selected these two evenly matched daughters as representatives of the sire. TREF 909L is a maternal sister to TREF Grand Slam working in our program as well as Schock Limousin.



LOT
53A



LOT
53B

53a

TREF LENNON 924K

PUREBRED(100/88.9) COW · DOUBLE POLLED · RED
03/08/2023 · TREF 924L · NPF2567115

TOMV DIESEL 619D
TREF HARDCORE 204H
TREF DELANEY 204D

DLVL AEROSMITH 329A
TREF ESMERELDA 310E
TREF CINDERELLA 110C

GV AUSTIN 701A
MISS TOM 118Y
JYF YIELDMASTER 80Y
TREF TREASURE 304T
DLVL YOUNG GUN 125Y
DLVL MISS TIDE 790T
JYF YIELDMASTER 80Y
TREF ZIPPY 810Z

ACT BW
77
ADJ WW
509
ADJ YW
852

	CE	BW	WW	YW	MK	TM	CM	SC	DC	YG	CW	RE	MB	\$MTI
EPDS	11	.6	58	93	27	56	8	.1	14	-.54	29	1.29	-.12	48
%Rank	40	40	75	60	30	55	25	95	45	25	30	15	80	80

53b

TREF LITTLE SUNSHINE 935L

PUREBRED(96/88.5) COW · DOUBLE POLLED · RED
03/19/2023 · TREF 935L · NPF2567100

WULFS CAPER 3303C
TREF EZ STREET 107E
TREF COCOA BEAN 107C

JYF YIELDMASTER 80Y
TREF CINDERELLA 110C
TREF ZIPPY 810Z

KORC WULFS SNOW PRINCE
WULFS ARMADA 3303A
DLVL AEROSMITH 329A
TREF ASIA 907A
TMF SYMBOL 188S
AIRLIE TARA
ROMN TOW TRUCK 111T
TREF SCARLET 310G

ACT BW
76
ADJ WW
570
ADJ YW
913

	CE	BW	WW	YW	MK	TM	CM	SC	DC	YG	CW	RE	MB	\$MTI
EPDS	10	.9	67	106	26	59	6	0	12	-.54	32	1.31	-.14	50
%Rank	50	45	45	30	35	40	50	95	70	25	25	10	85	70

Here are a couple daughters of two herd bulls we have raised that have left a big impact on our herd, Hardcore and EZ Street. For that reason, we are going to part with only one daughter of each. What makes these two similar is that they are related on the dam side and go back to Tow Truck, another great cow producer that walked our pastures for several years.

OPEN YEARLING HEIFERS



54A

TREF LANA 904L

PUREBRED(100/90.3) COW · HOMO POLLED (P-2) · RED
02/25/2023 · TREF 904L · NPF2567171

GV X-MAN 343E
GV GRID IRON 862G
GV MS AMHERST 5517C

RPY PAYNES DIESEL 37D
TREF JULIANNA 753J ET
TREF YAKIRA 766Y

GV X-MAN 446Z
GV MISS GENERAL 864U
HUNT AMHERST 71A
GV MISS TUFF ENUFF 9910W

COLE ARCHITECT 08A
EMF POLL ZILL
ROMN TOW TRUCK 111T
TREF SASHA 266S

ACT BW
87
ADJ WW
540
ADJ YW
910

	CE	BW	WW	YW	MK	TM	CM	SC	DC	YG	CW	RE	MB	\$MTI
EPDS	6	4.2	70	101	23	58	2	.72	13	-.48	26	1.17	-.17	49
%Rank	90	>95	30	45	65	45	95	30	60	45	40	30	90	75

54B

TREF LAYCE 912L

PUREBRED(100/90.2) COW · DOUBLE POLLED · RED
03/02/2023 · TREF 912L · NPF2567168

GV X-MAN 343E
GV GRID IRON 862G
GV MS AMHERST 5517C

WULFS FIAT K683F ET
TREF JOCELYN 729J
TREF ZENA 836Z

GV X-MAN 446Z
GV MISS GENERAL 864U
HUNT AMHERST 71A
GV MISS TUFF ENUFF 9910W

HUNT CREDENTIALS 37C ET
WULFS SOLOIST 6284S
RICHMOND XANDER SRD 22X
TREF PERFECTION 036P

ACT BW
88
ADJ WW
588
ADJ YW
966

	CE	BW	WW	YW	MK	TM	CM	SC	DC	YG	CW	RE	MB	\$MTI
EPDS	8	3.4	70	95	30	65	6	.4	13	-.49	25	1.09	-.06	53
%Rank	70	90	30	55	15	15	50	70	60	45	45	45	60	50

Here's a pair of heifers out of GV Grid Iron with a ton of maternal power. They represent the top-end of that sire group and are offered here for sale. This opportunity is only possible because our female numbers are high enough for us to part with the best. Both are out of first calf heifers.



55A

TREF LUNAR 933L

PUREBRED(100/90.9) COW · DOUBLE POLLED · DOUBLE BLACK
03/19/2023 · TREF 933L · NPF2567128

RICHMOND CRUSADER SRD 53C
RICHMOND FANTOM SRD 102F
RICHMOND BLUSH SRD 93D

WULFS CAPER 3303C
TREF FAITHFUL 486F
TREF APRICOT 986A

RICHMOND ZODIAC SRD 29Z
RICHMOND ZANDY SRD 49Z
RICHMOND BLACKOUT SRD 10B
RICHMOND BLUSH SRD 178B

KORC WULFS SNOW PRINCE
WULFS ARMADA 3303A
RICHMOND XANDER SRD 22X
TREF ROSE 186R

ACT BW
88
ADJ WW
572
ADJ YW
876

	CE	BW	WW	YW	MK	TM	CM	SC	DC	YG	CW	RE	MB	\$MTI
EPDS	5	4.1	66	96	25	58	3	.6	12	-.55	29	1.24	-.29	44
%Rank	95	95	45	55	45	45	90	40	70	25	30	20	>95	95

55B

TREF LUCINDA 936L

PUREBRED(100/90.7) COW · DOUBLE POLLED · RED
03/23/2023 · TREF 936L · NPF2567129

RICHMOND CRUSADER SRD 53C
RICHMOND FANTOM SRD 102F
RICHMOND BLUSH SRD 93D

WULFS CAPER 3303C
TREF FLASH DANCE 488F
TREF ZIG ZAG 882Z

RICHMOND ZODIAC SRD 29Z
RICHMOND ZANDY SRD 49Z
RICHMOND BLACKOUT SRD 10B
RICHMOND BLUSH SRD 178B

KORC WULFS SNOW PRINCE
WULFS ARMADA 3303A
SYES USER FRIENDLY 524U
TREF X-POSE 682X

ACT BW
87
ADJ WW
590
ADJ YW
956

	CE	BW	WW	YW	MK	TM	CM	SC	DC	YG	CW	RE	MB	\$MTI
EPDS	7	3	67	97	27	60	3	.65	14	-.54	26	1.22	-.3	44
%Rank	80	85	45	50	30	35	90	40	45	25	40	20	>95	>95

Fantom sired us a large group of heifers, so we decided to offer another very closely matched set. Upon further inspection as I'm preparing footnotes, I discovered they are three-quarter sisters! What makes them different, is one is red and the other is black.

OPEN YEARLING HEIFERS



LOT
56A



LOT
56B

56A

TREF LEANN 927L

PUREBRED(100/95.5) COW · HOMO POLLED (P-1) · BLACK
03/09/2023 · TREF 927L · NPF2567093

SYES USER FRIENDLY 524U
DLVL FEATHERLITE 8138F
DLVL MISS RIPTIDE 929W

AR EXECUTIVE 7173E
AR HOITY TOITY 0103H
AR WHIMSY 9107W

WULFS RANSOM 3059R
MISS SYES JUSTICE 224S
RMKR RIPTIDE 515R
TREF MISS 937N

AR COLONEL 531C
AR BEST MAE WEST 4102B
AR POL POLITITIAN 4132P
AR POL PRETTY PAM 459P

ACT BW
70
ADJ WW
549
ADJ YW
765

	CE	BW	WW	YW	MK	TM	CM	SC	DC	YG	CW	RE	MB	\$MTI
EPDS	13	-1.9	39	55	27	47	7	.07	12	-.51	8	1.01	-.08	43
%Rank	25	10	>95	>95	30	95	35	95	70	35	95	65	65	>95

56B

TREF LAUREN 946L

PUREBRED(100/90.5) COW · HOMO POLLED (P-1) · BLACK
04/04/2023 · TREF 946L · NPF2567147

SYES USER FRIENDLY 524U
DLVL FEATHERLITE 8138F
DLVL MISS RIPTIDE 929W

RPY PAYNES DIESEL 37D
TREF GRACIE 592G
TREF CHARLOTTE 192C

WULFS RANSOM 3059R
MISS SYES JUSTICE 224S
RMKR RIPTIDE 515R
TREF MISS 937N

COLE ARCHITECT 08A
EMF POLL ZILL
RPY PAYNES DERBY 46Z
TREF ZAZU 892Z

ACT BW
96
ADJ WW
585
ADJ YW
986

	CE	BW	WW	YW	MK	TM	CM	SC	DC	YG	CW	RE	MB	\$MTI
EPDS	8	3.1	62	87	22	52	1	.38	15	-.44	16	.96	-.18	46
%Rank	70	85	60	70	75	75	>95	80	20	60	75	75	90	90

These are the last of the Featherlite heifers to be born here. Both are very high percentage Purebreds—homo polled with great temperaments. These stout structured, easy-doing kinds will never go out of style. Don't miss your chance to own one of these homozygous polled purebred heifers.



LOT
57A



LOT
57B

57A

TREF LYNA 940L

PUREBRED(100/87.2) COW · HOMO POLLED (P-3) · RED
03/29/2023 · TREF 940L · NPF2567132

TREF COAL TRAIN 707C
TREF GRAND SLAM 111G
TREF CHANEL 111C

RPY PAYNES CRACKER 17E
TREF GEMINI 505G
TREF WILD ROSE 504W

RPY PAYNES DERBY 46Z
TREF YESTERDAY 707Y
JYF YIELDMASTER 80Y
TREF WINDSWEEP 511W

COLE ARCHITECT 08A
EDW BEACH BODY
WULFS RANSOM 3059R
TREF TREASURE 304T

ACT BW
78
ADJ WW
538
ADJ YW
873

	CE	BW	WW	YW	MK	TM	CM	SC	DC	YG	CW	RE	MB	\$MTI
EPDS	13	-1.6	52	79	25	51	7	.6	12	-.45	19	1.08	-.16	44
%Rank	25	10	90	85	45	80	35	40	70	60	65	50	90	>95

57B

TREF LIBBY 941L

PUREBRED(100/89.6) COW · HOMO POLLED (P-1) · RED
03/29/2023 · TREF 941L · NPF2567156

TREF COAL TRAIN 707C
TREF GRAND SLAM 111G
TREF CHANEL 111C

TOMV DIESEL 619D
TREF HAYDEN 658H
TREF CHARLOTTE 192C

RPY PAYNES DERBY 46Z
TREF YESTERDAY 707Y
JYF YIELDMASTER 80Y
TREF WINDSWEEP 511W

GV AUSTIN 701A
MISS TOM 118Y
RPY PAYNES DERBY 46Z
TREF ZAZU 892Z

ACT BW
79
ADJ WW
546
ADJ YW
874

	CE	BW	WW	YW	MK	TM	CM	SC	DC	YG	CW	RE	MB	\$MTI
EPDS	12	0	57	91	29	57	8	.4	12	-.51	30	1.28	-.18	45
%Rank	30	30	75	65	15	50	25	70	70	35	30	15	90	95

These two Grand Slam heifers are very evenly matched. Moderate framed, thick hind quartered, homo polled, and even born on the same day. If you want to get in the business of raising hard to find heifer bulls, these two could be the right breeding pieces.

OPEN BALDIE COMMERCIAL FEMALES



For the past seven years we've been experimenting using our Limousin bulls on F1 (Hereford/Angus cross) cows and heifers. The results have been dramatic as we see the direct results of heterosis. We have decided to part with all of the F2s (Limousin/Hereford/Angus cross) open heifer calves from this first mating. These beautiful baldies have that extra hind quarter and fleshing ability to make a great set of cows producing that highly sought after three quarter blood calf.

They are all bangs vaccinated and are daughters of the same bulls we use on our registered herd. We will sell two small groups, one black package and one red package.

The price times the number in the group, all to go.

58

BLACK GROUP

TAG	SIRE	BD	JAN.10 WT.
2143	Hot Shot	2/19/23	864
2150	Hot Shot	3/3/23	826
1605	Grand Slam	3/15/23	774
1611	EZ Street	3/17/23	786
1612	Grand Slam	3/26/23	862
1614	Fantom	3/30/23	828
1615	Fantom	4/1/23	749

59

RED GROUP

TAG	SIRE	BD	JAN.10 WT.
2141	Hot Shot	2/26/23	822
2160	Hot Shot	2/28/23	880
2163	Hot Shot	2/28/23	858
1617	Grand Slam	4/12/23	810



Your Help Was So Appreciated!

Brett Waldera from Blair, Wisconsin, spent 10 days with us in January helping prepare all the sale cattle with picturing, videoing, tagging, tattooing, weighing, chores and whatever else prep entails. Those days, as everyone in the purebred business understands, are the most stressful and critical toward the success of a production sale. Some people just "have it" when it comes to being around cattle and Brett is one of them. He also shares the same passion about Limousin cattle. Besides the work, we so much enjoyed having you around! Brett even got to experience a little South Dakota wind chill during his visit! Thank you so much! You're welcome back anytime.

TREFTZ LIMOUSIN



T R E F



Forty-one years ago in 1983, fresh out of college and back on the farm, I wanted something different. I purchased my first yearling Limousin bull, an Octagon Ruler son in the next county where a very large herd of “apricot” colored Limousin existed. I had no clue about these cattle or this operation. He was horned and unregistered and not like any bull I had ever seen before. As we pulled into the yard, I was in awe of all the golden colored cattle. As the breed was still somewhat in its infancy, I'm astonished NOW how that herd of cattle was created so quickly. I was told

several years later that the financier of that herd was the owner of Wells Lamont gloves who lived in Aberdeen at the time.

Of course, Limousin was known as an exotic breed, and with that young bull standing next to my dad's Herefords and roans, exotic had a NEW meaning. It was almost like a different species of animal had strayed into our cattle yard with the stark difference between the breeds at the time. To say I was excited for that first calf crop to be born, is beyond description. My dad's herd at the time was anything but consistent with a multitude of breeds and colors, including dairy cross—every farmer was milking cows in the day—yet very productive cows. What that first cross did on that set of calves that summer was as exciting as calving day. The colors were still very sporadic but the thing that was consistent was that big beautiful hind quarter. That marked the beginning of my passion.

I have never questioned or wavered from that decision I made 41 years ago. The cattle, not me, have allowed me to meet people around the world. That was a journey I would have never traveled had I not wondered into that neighbor's yard in the next county as a 21 year old “kid”. The friendships established along the way have led to a very fulfilling life adventure. I thank all of you for sharing

MILK AND MEAT

Yes, you can have milk and meat both. The TREF bulls in this sale rank in the top 25% of the breed for milk with a 28.6 epd. Their average ribeye epd of 1.26 ranks them in the top 12% of the breed.

REFERENCE SIRES

	CE	BW	WW	YW	MK	TM	CM	SC	DC	YG	CW	RE	MB	\$MTI
ANCHOR B GOLD RUSH 48G <i>B BAR AUSTIN HEALY 4D ET x ANCHOR B BAILEY 21B · PERCENTAGE(100/91.2) · Homo Polled (T) · Red</i>	2	5.6	102	151	30	81	1	1.2	20	-0.69	62	2.08	-0.45	50
BALAMORE HERSHEY 0120H <i>BALAMORE ENDEAVOR 701E x CLARKS EXTRAVAGANT KISS · PERCENTAGE(93/90.5) · Homo Polled (T) · Homo Black (T)</i>	10	-1.9	60	87	21	51	7	-	16	-0.69	11	1.36	-0.27	44
GV GRID IRON 862G <i>GV X-MAN 343E x GV MS AMHERST 5517C · PUREBRED(100/89.9) · Homo Polled (P-1) · Red</i>	11	1.3	72	100	26	62	7	0.5	13	-0.51	25	1.19	-0.09	52
HLEZ MONEY 821H <i>TREF EZ STREET 107E x TREF FRANKIE 420F · PUREBRED(96/89.2) · Double Polled · Red</i>	10	0.5	67	97	27	61	8	0.8	16	-0.60	24	1.31	-0.16	49
JBV MILESTONE 206K <i>WULFS FIFTY T804F x JBV BUBBLES 702D · PUREBRED(100/89.2) · Homo Polled (P-1) · Red</i>	12	0.5	68	93	31	65	7	0.6	20	-0.56	9	0.99	-0.28	45
RICHMOND FANTOM SRD 102F <i>RICHMOND CRUSADER SRD 53C x RICHMOND BLUSH SRD 93D · PERCENTAGE(100/92.7) · Homo Polled (T) · Het Black (T)</i>	4	4.8	67	100	23	56	0	0.5	13	-0.53	40	1.29	-0.34	42
TREF EZ STREET 107E <i>WULFS CAPER 3303C x TREF COCOA BEAN 107C · PUREBRED(100/89.3) · Homo Polled (T) · Red</i>	8	0.0	72	100	33	69	8	1.0	18	-0.62	32	1.52	-0.04	55
TREF GRAND SLAM 111G <i>TREF COAL TRAIN 707C x TREF CHANEL 111C · PUREBRED(96/88.7) · Homo Polled (T) · Red</i>	11	0.1	52	84	29	55	6	0.5	9	-0.53	25	1.40	-0.11	46
TREF GUNPOWDER 290G <i>SYES EASY GOING 77E x TREF DAKOTA LOVE 290D · PUREBRED(94/87.7) · Homo Polled (T) · Double Black</i>	10	-0.8	55	89	23	50	7	0.8	18	-0.56	12	1.13	-0.14	46
TREF HARDCORE 204H <i>TOMV DIESEL 619D x TREF DELANEY 204D · PUREBRED(96/87.7) · Homo Polled (T) · Red</i>	8	3.5	88	145	29	73	6	0.2	12	-0.58	50	1.61	-0.26	52
TREF HOTSHOT 345H <i>B BAR BENTLEY 8D x TREF EMMA LOU 345E · PUREBRED(100/90) · Het Polled (T) · Black</i>	19	-2.7	60	92	32	62	12	0.8	12	-0.50	36	1.31	-0.23	44
TREF ZEUS 232Z <i>ROMN TOW TRUCK 111T x TREF RED WINE 232R · PERCENTAGE(92/88.8) · Homo Polled (T) · Red</i>	10	3.1	69	106	34	68	9	1.1	15	-0.54	37	1.22	-0.08	52



ANCHOR B GOLD RUSH 48G



BALAMORE HERSHEY 0120H



GV GRID IRON 862G



HLEZ MONEY 821H



JBV MILESTONE 206K



RICHMOND FANTOM SRD 102F



TREF EZ STREET 107E



TREF GRAND SLAM 111G



TREF GUNPOWDER 290G



TREF HARDCORE 204H



TREF HOTSHOT 345H

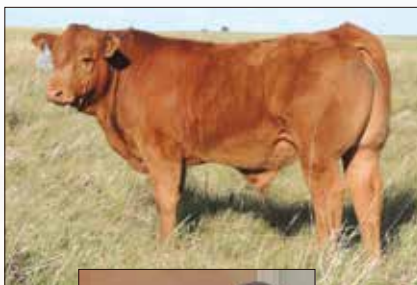
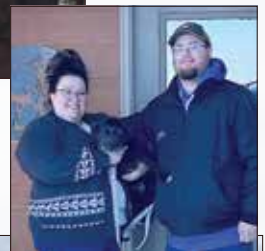
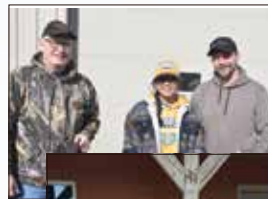


TREF ZEUS 232Z

[illegible]

NUMBER OF LOTS		GROSS	AVERAGE
_____	YEARLING BULLS	_____	_____
_____	18-MONTH-OLD BULLS	_____	_____
_____	2-YEAR-OLD BULLS	_____	_____
_____	BRED HEIFERS	_____	_____
_____	OPEN HEIFERS	_____	_____
_____	COMMERCIAL HEIFERS	_____	_____
_____	TOTAL LOTS	_____	_____

TREFTZ LIMOUSIN





Marketing Management

2005 RUHL DRIVE
CUTHRIE, OK 73044

Treftz WHERE
MUSCLE
STILL MATTERS
ANNUAL PRODUCTION SALE

FEBRUARY 10, 2024 • 1 P.M.

at the ranch in Wetonka, South Dakota

